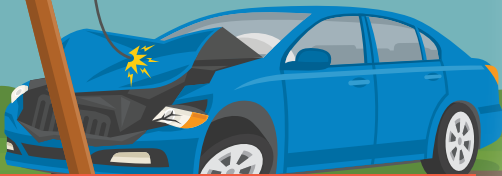


KNOW WHAT TO DO

if you're in an accident
involving power lines or
pad-mounted transformers



1



Do **NOT** leave the vehicle and warn others to stay away. The ground near the vehicle could be energized.

2



CALL 911 to have the utility company notified of the situation. Make sure first responders do not approach until it is deemed safe by the utility company.

3



STAY in the vehicle until utility workers have deemed the area safe. The **ONLY** reason to exit the vehicle is **IF IT'S ON FIRE**.

4



IF THE CAR IS ON FIRE, Jump clear of the vehicle **WITH FEET TOGETHER**, and **WITHOUT TOUCHING THE CAR AND THE GROUND AT THE SAME TIME**.

5



Continue to **HOP AWAY** with your **FEET TOGETHER** at least 50 feet or further, if you are able.

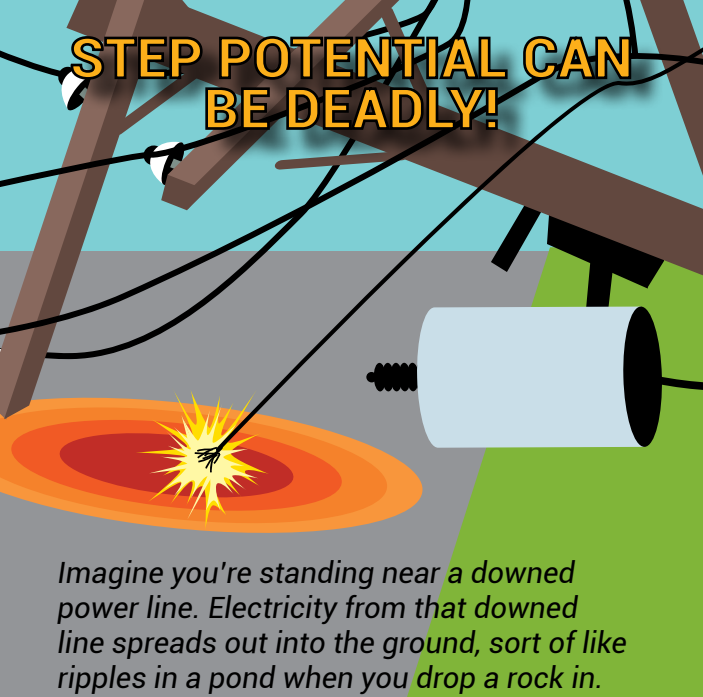


Todd-Wadena
ELECTRIC COOPERATIVE

800-321-8932 | 218-631-3120

www.toddwadena.coop

STEP POTENTIAL CAN BE DEADLY!



Imagine you're standing near a downed power line. Electricity from that downed line spreads out into the ground, sort of like ripples in a pond when you drop a rock in.

Step potential happens because different points on the ground around that electrical source have different amounts of voltage. If you step with one foot in a high-voltage area and the other foot in a lower-voltage area, electricity can flow through your body to balance the difference. Since your body conducts electricity, this can cause electrocution or serious injury.

- ✓ Stay away from downed power lines or damaged pad-mounted transformers.
- ✓ Always assume any fallen wire is live and alert emergency services and the utility.
- ✓ Do NOT attempt to rescue anyone in proximity to a downed power line and maintain a safe distance (at least 50 feet) until lineworkers from the utility confirm that the line has been de-energized.



Todd-Wadena
ELECTRIC COOPERATIVE

800-321-8932 | 218-631-3120

www.toddwadena.coop