



## Join Us for Our 2022 Annual Meeting

All Todd-Wadena Electric Cooperative members are invited to participate in the cooperative's Annual Meeting. This meeting provides members with information about the cooperative's growth, financial health, board election, and programs available to members.

Todd-Wadena Electric Cooperative will hold its Annual Meeting and member dinner on **Tuesday, April 19<sup>th</sup>, 2022**, at *Maslowski Wellness & Research Center (17 5<sup>th</sup> St. Southwest)* in Wadena. Children will be able to enjoy free swimming before and during the business meeting. A meal will follow the business meeting.

**SCHEDULE**

- 3:30 p.m.** Registration Opens
- 4:00 p.m.** Deep Dive Session: Changing Energy Resource Mix // Free Swim
- 4:30 p.m.** Bingo
- 5:30 p.m.** Business Meeting with meal to follow

Have a question you'd like the Board of Directors or CEO to answer at the Annual Meeting?  
[www.toddwadena.coop/askaquestion](http://www.toddwadena.coop/askaquestion)

**Date:** Tuesday, April 19<sup>th</sup>, 2022


**Location:** Maslowski Wellness & Research Center in Wadena, MN

**Member Prize:** For members attending the Annual Meeting: leather coasters, wood keychain, and soap—all handmade by *Bertha-Hewitt NextGen Bears* students.



## 2022 Voting Options

- 1** **Vote by Mail or Drop Box**  
Return your ballot in the provided envelopes. Your ballot must be received by mail at Survey & Ballot Systems by *April 19<sup>th</sup>, 2022*, or placed in the drop box located outside Todd-Wadena Electric Cooperative's office by *9 a.m. on April 14<sup>th</sup>*.
- 2** **Vote Online via DirectVote**  
There are instructions on the ballot you received in the mail on how to vote online using DirectVote. You will **not** need a SmartHub account in order to vote this way. Once you've authenticated with your *Member Number* and *Election Passcode* (found on the back of the return envelope) on the DirectVote page, simply follow the directions there to cast your vote. *Note: your ballot must be completed by 9 a.m. on Tuesday, April 19<sup>th</sup>.*


- 3** **Vote Online via SmartHub**  
Log into your SmartHub account and look for the "Vote Now" button in the upper right corner. Follow the instructions to finish casting your vote. You can also vote from within the SmartHub mobile app (available on both iOS and Android platforms). When you open the app, you will see a button that says "Vote Now" – tap it to get started. *Your ballot must be completed by 9 a.m. on Tuesday, April 19<sup>th</sup>.*
- 4** **Vote at the Annual Meeting**  
As always, there will be an opportunity to cast your vote at the Annual Meeting on *April 19<sup>th</sup>*. Votes cast at the Annual Meeting will be scanned and tallied on-site by SBS and added to the mailed and electronic ballot tally.

**April 19<sup>th</sup>**  
**2022**

## 2021 in Review

With our Annual Meeting coming up soon, it is a great time to reflect on what Todd-Wadena Electric Cooperative (TWEC) accomplished over the past year. I am pleased to report that the Cooperative had another strong year in 2021.

### Operations

Last year was one of TWEC's biggest construction years ever, with 152 new services installed. We also made significant progress on our vegetation management plan and system maintenance.

An essential part of providing safe, reliable service at a reasonable cost is the maintenance TWEC crews do out in the field every day. This includes testing and replacing poles, vegetation management, and tree trimming. Todd-Wadena contracts with *Central Applicators* to do all of our spraying. This gets done on a five-year rotation to ensure we get to all locations within a reasonable time to keep the lines clear.

In 2021, we cleared/sprayed 312 right-of-way miles. Crews tested 6,000 poles, with 133 identified for replacement. There were also 163 tree trimming service orders completed.

### Outages

Tree-related outages accounted for just over 45 percent of TWEC's total outages in 2021 (*see infographic on page 3*). As one of our biggest threats for outages, it makes vegetation management all the more important to keep our lines clear and reduce these outages.

Planned outages only accounted for 6.2 percent. Our crews work hard to do as much maintenance as they can while the wires are hot or live. However, there are instances when it just isn't safe and we need to cut the power to keep our lineworkers safe and your power reliable.

### Member Services

Through TWEC's Conservation Improvement Program, our members were able to save over 800,000 kWhs last year. Not only did those members save energy, but they also received rebates to install more efficient equipment.

One of the ways TWEC is able to keep costs low is through our load management programs. As energy use grows, typically on the warmest and coldest days of the year, the load curve starts to peak. At this peak, we utilize load management programs to decrease use when energy is most expensive. By controlling loads during peaks, TWEC saves money on wholesale costs thus lowering our members' rates to be a part of the program.

As you can see by the numbers, TWEC accomplished a lot over the past year. Thank you for your support as we work hard to provide you with reliable and affordable electricity. We look forward to serving you in 2022!



**Daniel Carlisle**  
President/CEO &  
General Counsel

### Construction

- ▶ **308** projects designed/staked/inspected
- ▶ **152** new services installed
- ▶ **67** service upgrades
- ▶ **2** miles of new service overhead line installed
- ▶ **15** miles of new service underground line installed
- ▶ **8.5** miles of overhead line rebuilt
- ▶ **4.5** miles of underground line rebuilt

### Maintenance

- ▶ **312** miles of right-of-way cleared/sprayed
- ▶ **6,000** poles tested, **133** identified for replacement
- ▶ **42** animal guards installed
- ▶ **163** tree trimming service orders completed
- ▶ **1,299** tree trimming units (a unit is a tree, brush, crown reduction, side branches, trimming, and removal)
- ▶ **94** new LED rental lights installed
- ▶ **82** LED rental lights converted from high pressure sodium or mercury vapor lights
- ▶ **1,232** miles of line was patrolled in 2021 for hazards, **232** issues were found and fixed

### Energy Management

- ▶ **881** energy efficiency incentives processed, an estimated **872,122 kWh** in energy savings in 2021
- ▶ **\$80,598** in energy rebates paid for efficiency upgrades in 2021
- ▶ Load Control Hours in 2021
  - **Dual Fuel: 50.5 hours** (winter season)
  - **Peak Shave Water Heating: 198.5 hours**
  - **Air Conditioning: 88 hours**
  - **Irrigation: 56 hours**
  - **C & I with Genset: 53 hours**
  - **Interruptible Metered C & I: 50 hours**

### Renewables

- ▶ **3** member-owned wind turbines
- ▶ **31** member-owned solar arrays on our systems
- ▶ Total renewable energy capacity of **832 kW**

**Daniel Carlisle**  
President/CEO & General Counsel

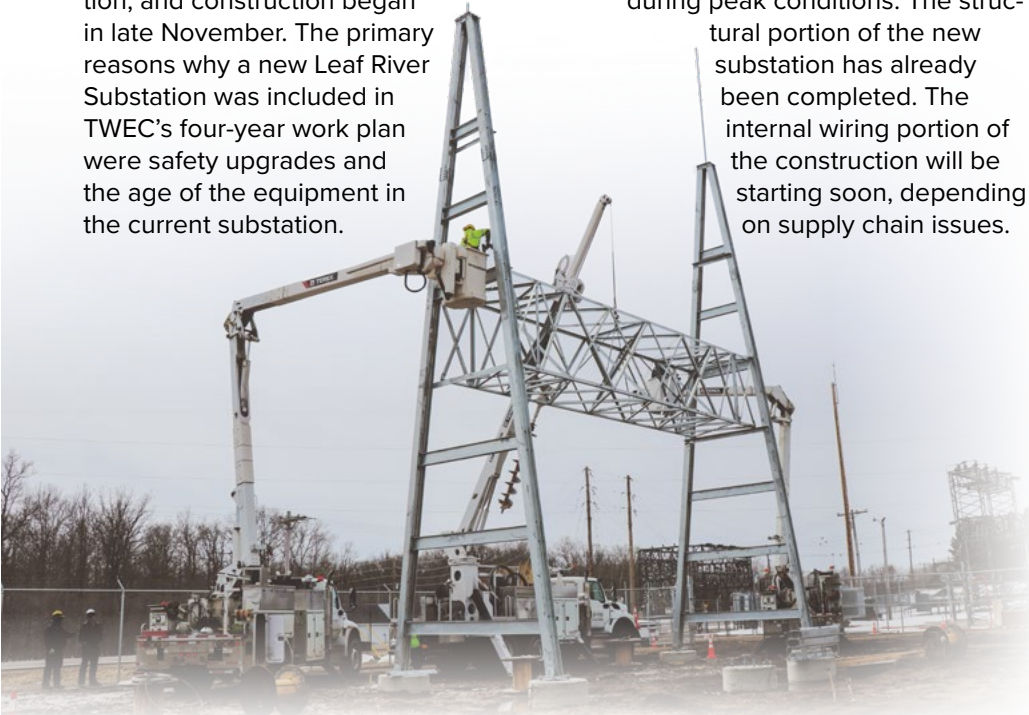
## 2021 Cooperative Reliability Highlights

Our commitment to provide our members with quality electric service requires investment, proper planning, and ongoing system maintenance. Equally important is our commitment to balancing **reliability** and **affordability** with member expectations.

### Substation Update

Todd-Wadena Electric Cooperative's (TWEC) Operations Department is working on building the new *Leaf River Substation*. The new substation is located adjacent to the current substation, and construction began in late November. The primary reasons why a new Leaf River Substation was included in TWEC's four-year work plan were safety upgrades and the age of the equipment in the current substation.

The new Leaf River Substation will have an increased load capacity that will provide room for growth for Todd-Wadena in future years. It will also help with the ability to back feed during peak conditions. The structural portion of the new substation has already been completed. The internal wiring portion of the construction will be starting soon, depending on supply chain issues.



### Outage Statistics

TWEC strives to provide its members with safe, reliable electric service, however, events do occur that are out of the control of the cooperative.

#### WHAT'S CAUSING OUTAGES?



TREES: **45.7%**



UNKNOWN: **22.7%**



EQUIPMENT: **15.9%**



PLANNED: **6.2%**



ANIMAL: **5.3%**



WEATHER: **2.9%**



PUBLIC: **1.2%**



FIRE: **0.1%**

## Board Minutes

**Highlights from the February 25<sup>th</sup>, 2022, regular board meeting:**

- Board Member Mike Thorson was appointed as TWEC's board representative on the Great River Energy (GRE) Board of Directors for 2022.
- CEO Dan Carlisle shared highlights from the CEO Close-Up conference held in January. He also touched on the success of the Meals 4 Members initiative.
- The 2022 Legal Retainer with Pemberton Law Office was reviewed and approved.
- Lisa Graba-Meech, CFO, presented the January financials to the board. Monthly kWh sales were 15 percent over budget. Energy revenue was 15 percent over budget. January's purchased power expense was 14 percent over budget. Tier is -0.38 and Equity is 42.39.
- Member and Energy Services Manager Allison Uselman reported on the required annual democracy filing. The new rates have been updated and were in effect January 1<sup>st</sup>, 2022. The board accepted the annual democracy filing as presented.
- Operations Manager Todd Miller answered a few questions on the status of the Leaf River Substation rebuild and the process of snow removal at the Cooperative.
- Thorson gave the GRE financial report. January was a strong month with both demand and energy coming in ahead of budget.
- Board Chair Miles Kuschel mentioned the redistricting of the MN House and U.S. House representatives. There will be many changes at this year's election due to those changes and retirements.
- Board Member Tom Brichacek provided an update from the recent Operation Round Up (ORU) meeting. The ORU Board awarded \$12,000 this quarter.
- Board Member Kristine Spadgenske completed her Credentialed Cooperative Director training and was awarded her official certification.

# 2021 Financial Reports

## BALANCE SHEETS

|  | 2021                | 2020                |
|--|---------------------|---------------------|
| <b>Utility Plant</b>                             |                     |                     |
| 1. Utility Plant in Service                      | \$64,111,669        | \$59,360,579        |
| 2. Construction Work in Progress                 | 1,299,942           | 2,652,206           |
| <b>3. Total Utility Plant</b>                    | <b>65,411,611</b>   | <b>62,012,785</b>   |
| 4. Less Accumulated Depreciation                 | 22,270,591          | 21,109,704          |
| <b>5. Net Utility Plant</b>                      | <b>43,141,020</b>   | <b>40,903,081</b>   |
| <b>Other Property and Investments</b>            |                     |                     |
| 6. Investments in Associate Orgs.                | 10,282,423          | 9,686,385           |
| 7. Other Investments                             | 238,984             | 244,009             |
| <b>8. Total Other Property and Investments</b>   | <b>10,521,407</b>   | <b>9,930,394</b>    |
| <b>Current Assets</b>                            |                     |                     |
| 9. Cash  | 498,547             | 367,918             |
| 10. Short-Term Investments                       | 2,039,620           | 3,388,435           |
| 11. Current Maturities of Notes Rec.             | 42,174              | 40,300              |
| 12. Accts. Receivable, less reserves             | 2,036,544           | 1,658,935           |
| 13. Materials & Supplies                         | 806,617             | 519,350             |
| 14. Prepayments                                  | 28,021              | 21,898              |
| 15. Interest Receivable                          | 5,463               | 5,489               |
| <b>16. Total Current Assets</b>                  | <b>5,456,986</b>    | <b>6,002,325</b>    |
| <b>Other Assets</b>                              |                     |                     |
| 17. Deferred Debits                              | 253,699             | 314,302             |
| <b>Total Assets</b>                              | <b>\$59,373,112</b> | <b>\$57,150,102</b> |
| <b>Current Liabilities</b>                       |                     |                     |
| 18. Notes Payable                                | -                   | -                   |
| 19. Current Maturities: Long-Term Debt           | 1,108,777           | 1,068,117           |
| 20. Current Maturities: Post-retirement Benefits | 11,800              | 17,600              |
| 21. Accounts Payable                             | 2,785,355           | 2,562,124           |
| 22. Consumer Deposits                            | 208,493             | 210,702             |
| 23. Accrued Taxes                                | 290,837             | 272,734             |
| 24. Accrued Interest                             | 184,247             | 41,792              |
| 25. Other Accrued Liabilities                    | 192,416             | 180,767             |
| <b>26. Total Current Liabilities</b>             | <b>4,781,925</b>    | <b>4,353,836</b>    |
| <b>Long-Term Debt</b>                            |                     |                     |
| <b>27. Net Current Maturities</b>                | <b>27,369,882</b>   | <b>26,095,900</b>   |
| <b>Other Liabilities</b>                         |                     |                     |
| 28. Deferred Credits                             | 1,525,885           | 1,333,843           |
| 29. Other Non-Current Liabilities                | 328,496             | 341,576             |
| <b>30. Total Other Liabilities</b>               | <b>1,854,381</b>    | <b>1,675,419</b>    |
| <b>Total Liabilities</b>                         | <b>34,006,188</b>   | <b>32,125,155</b>   |
| <b>Equities</b>                                  |                     |                     |
| 31. Patronage Capital                            | 23,471,186          | 23,252,298          |
| 32. Other Equities                               | 1,895,738           | 1,772,649           |
| <b>33. Total Equities</b>                        | <b>25,366,924</b>   | <b>25,024,947</b>   |
| <b>Total Liabilities and Equities</b>            | <b>\$59,373,112</b> | <b>\$57,150,102</b> |

## PROFIT & LOSS STATEMENT

|   | 2021               | 2020               |
|---|--------------------|--------------------|
| <b>Operating Revenue</b>                  |                    |                    |
| 1. Electric Energy Revenue                | \$20,919,257       | \$19,551,687       |
| 2. Other Electric Revenue                 | 40,043             | 19,494             |
| <b>3. Total Operating Revenue</b>         | <b>20,959,300</b>  | <b>19,571,181</b>  |
| <b>Operating Expenses</b>                 |                    |                    |
| 4. Purchased Power Cost                   | 12,647,227         | 11,421,147         |
| 5. Operations Expense                     | 1,031,765          | 777,578            |
| 6. Maintenance Expense                    | 1,325,510          | 1,265,231          |
| 7. Consumer Accounts Expense              | 503,051            | 437,979            |
| 8. Customer Service & Information         | 612,890            | 479,067            |
| 9. Sales Expense                          | 43,260             | 34,496             |
| 10. Administrative & General Expense      | 1,686,387          | 1,407,144          |
| 11. Depreciation                          | 1,840,074          | 1,826,278          |
| 12. Interest on Long-Term Debt            | 906,864            | 1,012,948          |
| 13. Other Expenses                        | 8,877              | 9,038              |
| <b>14. Total Cost of Electric Service</b> | <b>20,605,905</b>  | <b>18,670,906</b>  |
| <b>15. Operating Margin</b>               | <b>353,395</b>     | <b>900,275</b>     |
| <b>Non-Operating Margins</b>              |                    |                    |
| 16. Interest Income                       | 93,384             | 287,859            |
| 17. G & T Capital Credits                 | 707,862            | 275,249            |
| 18. Other Capital Credits                 | 105,002            | 83,365             |
| 19. Other Income Loss (-)                 | 184,768            | 82,425             |
| <b>20. Total Non-Operating Margin</b>     | <b>1,091,016</b>   | <b>728,898</b>     |
| <b>Total Net Margins</b>                  | <b>\$1,444,411</b> | <b>\$1,629,173</b> |

## WHERE DOES YOUR DOLLAR GO?

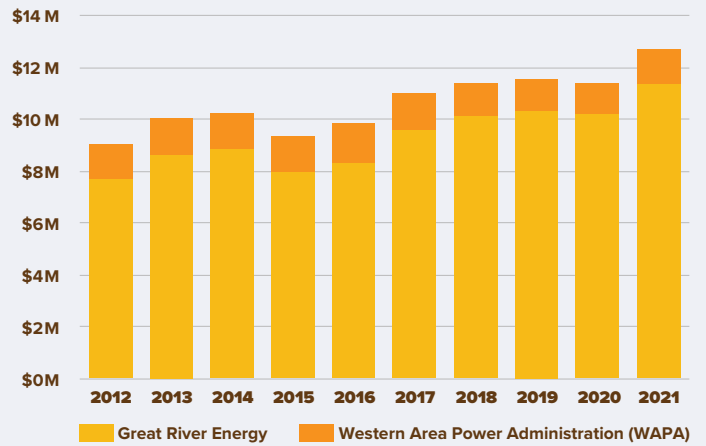
|   |               |
|---|---------------|
| <b>Power Cost</b>                         | <b>\$0.60</b> |
| <b>Operations &amp; Maintenance</b>       | <b>\$0.11</b> |
| <b>Depreciation</b>                       | <b>\$0.09</b> |
| <b>Admin &amp; General</b>                | <b>\$0.08</b> |
| <b>Interest on Long Term Debt</b>         | <b>\$0.04</b> |
| <b>Customer Service &amp; Information</b> | <b>\$0.03</b> |
| <b>Consumer Accounts</b>                  | <b>\$0.03</b> |
| <b>Operating Margins</b>                  | <b>\$0.02</b> |
|   | <b>\$1.00</b> |



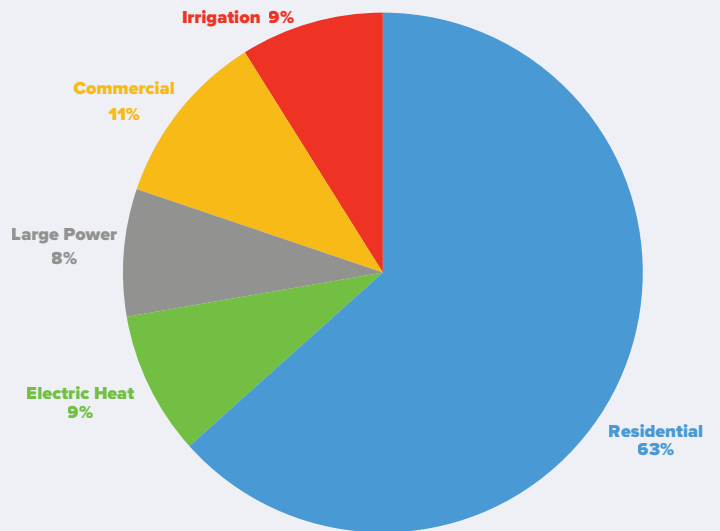
# SCHEDULE OF CAPITAL CREDITS

| Year                       | Todd-Wadena Capital Credits | G&T Capital Credits | Total               |
|----------------------------|-----------------------------|---------------------|---------------------|
| 1980                       | \$-                         | \$24                | \$24                |
| 1981                       | -                           | 109                 | \$109               |
| 1982                       | -                           | -                   | \$-                 |
| 1983                       | -                           | 5                   | \$5                 |
| 1984                       | -                           | 225                 | \$225               |
| 1985                       | -                           | 420                 | \$420               |
| 1986                       | -                           | 187                 | \$187               |
| 1987                       | -                           | 377                 | \$377               |
| 1988                       | -                           | 844                 | \$844               |
| 1989                       | -                           | 1,403               | \$1,403             |
| 1990                       | -                           | 1,164               | \$1,164             |
| 1991                       | -                           | 84,841              | \$84,841            |
| 1992                       | -                           | 72,661              | \$72,661            |
| 1993                       | -                           | 55,146              | \$55,146            |
| 1994                       | -                           | 78,204              | \$78,204            |
| 1995                       | -                           | 63,715              | \$63,715            |
| 1996                       | -                           | 84,092              | \$84,092            |
| 1997                       | 55                          | 65,703              | \$65,758            |
| 1998                       | 34                          | 1,200               | \$1,234             |
| 1999                       | 10                          | -                   | \$10                |
| 2000                       | 159                         | 5,683               | \$5,842             |
| 2001                       | 174                         | 76,416              | \$76,590            |
| 2002                       | 218                         | 115,279             | \$115,497           |
| 2003                       | 430                         | 102,764             | \$103,194           |
| 2004                       | 431                         | 151,495             | \$151,926           |
| 2005                       | 671                         | 323,832             | \$324,503           |
| 2006                       | 5,530                       | 565,642             | \$571,172           |
| 2007                       | 822,692                     | 359,882             | \$1,182,574         |
| 2008                       | 683,338                     | 314,403             | \$997,741           |
| 2009                       | 1,007,147                   | 311,469             | \$1,318,616         |
| 2010                       | 780,072                     | 240,938             | \$1,021,010         |
| 2011                       | 857,835                     | 308,387             | \$1,166,222         |
| 2012                       | 1,184,561                   | 441,137             | \$1,625,698         |
| 2013                       | 1,451,184                   | 469,975             | \$1,921,159         |
| 2014                       | 1,124,262                   | 609,859             | \$1,734,121         |
| 2015                       | 1,022,857                   | 94,549              | \$1,117,406         |
| 2016                       | 1,063,297                   | 397,277             | \$1,460,574         |
| 2017                       | 1,416,969                   | 429,454             | \$1,846,423         |
| 2018                       | 1,440,554                   | 301,723             | \$1,742,277         |
| 2019                       | 1,095,837                   | 323,999             | \$1,419,836         |
| 2020                       | 1,341,129                   | 272,846             | \$1,613,975         |
| 2021                       | 736,549                     | 707,862             | \$1,444,411         |
| <b>Total Patr. Capital</b> | <b>\$16,035,995</b>         | <b>\$7,435,191</b>  | <b>\$23,471,186</b> |

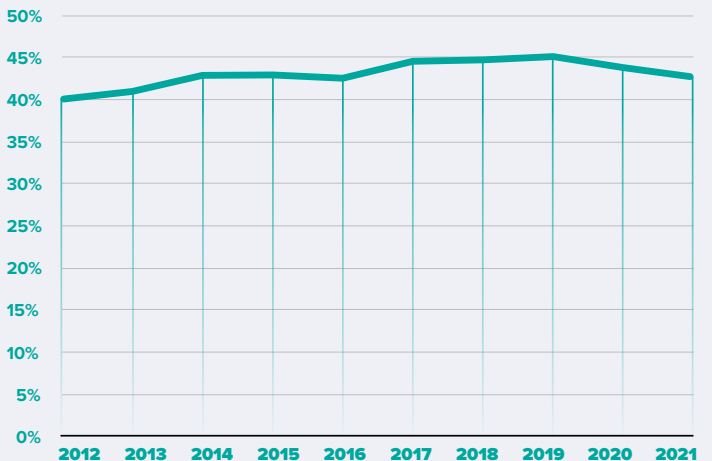
# WHOLESALE POWER COSTS OVER TIME



# REVENUE BY RATE CLASS



# EQUITY OVER TIME



## Todd-Wadena Electric Cooperative • 2021 Annual Meeting Minutes • April 20<sup>th</sup>, 2021

The 2021 Annual Meeting of the members of Todd-Wadena Electric Cooperative was held at the Todd-Wadena Electric Cooperative headquarters at 550 Ash Ave. NE, Wadena, MN 56482 and broadcasted live across Zoom through the Cooperative's SmartHub portal as well as 99.7 Hot Rod Radio KXDL and 101.7 FM KWAD.

Board Chair, Miles Kuschel called the Annual Meeting to order at 5:30 p.m. The directors, nominating chair, management, and CEO, Dan Carlisle, acting as parliamentarian, were present in-person for the meeting.

Miles took a moment to recognize veterans, active military, police, firefighters, first responders, and essential workers. He then called upon Tony Hoff, Marketing Manager with Survey and Ballots, whom attended via Zoom. Tony reported that 1,312 ballots were cast for the 2021 Todd-Wadena Electric Cooperative election. He established the Cooperative did reach over 50 votes to be cast, which abides by the bylaws set forth. He declared a quorum to exist.

Miles asked the members attending via Zoom if they wish to accept the notice as printed in the March edition of the Pine to Prairie.

**ACTION:** *The members voted to accept.*

Therefore; the meeting was held in accordance with the official notice of *Exhibit B* which was mailed to all members in the March edition of the Pine to Prairie, which follows the Cooperative's bylaws.

Miles asked the members attending via Zoom if they wish to approve the 2020 Annual Meeting minutes as printed in the April edition of the Pine to Prairie.

**ACTION:** *The members voted to approve.*

Miles then introduced the Board of Directors and the CEO, Dan Carlisle. He then recognized the employees of the Cooperative: highlighting Todd Miller for 35 years of service and Jason Orlando for 20 years of service; introduced the three employees who recently joined the Cooperative family; Mike Orlando, Brayden Gwiazdon, and Kevin Lupke; and gave well wishes to retiree Al Malone. Miles also shared the 2020 education scholarship winners.

Miles gave the Chairman's report. He spoke of what a cooperative is and what it means to be a member of such. Highlighting the seven principles of cooperatives, Miles focused on Todd-Wadena's concern for community as everyone has rallied together to get through 2020, the pandemic, and pushing forward to a positive year in 2021. The Cooperative worked hard to save money, keep employees and members safe, and found ways to increase member benefits. Miles also talked about the new headquarters building project, as it stayed on time and within budget.

Miles and Kallie held a prize drawing giving away multiple \$25 energy credits and gift cards to local restaurants.

Dan Carlisle, CEO gave the business report. The kilowatt hour sales were slightly down in 2020, but still a good year as the residential rate class continues to contribute the largest share of sales. The total operating revenue was \$19,571,182, and the cost of electric service was \$18,670,908. The non-operating margin was \$728,897, which resulted in a total net margin of \$1,629,171. Equity 43.79%. Dan shared that capital credit retirements were \$850,000, which includes a large retirement from Great River Energy. The Cooperative was also able to give a \$400,000 covid relief payment to current members. Dan then spoke about the Member Services department project to install the new demand response units over the next five years. The team also developed a new logo, new website, rolled out new and exciting rebates for members, and so much more. The Operations department built 110 new services, completed a four-year work plan, and then was able to begin on the next four-year work plan. There will be upgrades in the Staples and Nimrod areas in 2021.

Dan then introduced Jon Brekke, from Great River Energy. He pre-recorded a video for Todd-Wadena to share with the members to discuss Coal Creek Station closing, future resource mix plans, and reliability. Dan thanked GRE for their donation to the Cooperative's Operation Round Up fund.

Miles and Kallie held a prize drawing giving away multiple \$25 energy credits and gift cards to local restaurants.

Miles called upon Wally Weise, Nominating Chair for the Nominating Committee Report. *Exhibit A* sets forth the nominees for the two director positions for a three-year term; the candidates are Miles Kuschel (I); and Tom Brichacek (I); and Kevin Ehnes (withdrew). Wally then introduced the Nominating Committee members.

Tony Hoff released the results of the election. The following were the results: Tom Brichacek (1,071); Miles Kuschel (1,047).

The following Bylaw changes all passed.

1. A proposal that adds a new bylaw provision to restrict the disclosure of member information.
2. A proposal that updates the bylaw provision establishing the timeline to be nominated to the directors election ballot.
3. A proposal that adds a new bylaw provision establishing an arbitration mechanism for dispute resolution.

Miles addressed a couple of questions submitted by members prior to the meeting.

Miles and Kallie held a prize drawing giving away a couple of \$100 energy credits.

The meeting adjourned at 6:00 p.m.

Todd-Wadena Electric Cooperative is an equal opportunity provider and employer.

# MISSION

To be a trusted partner providing safe, reliable, and affordable energy options to our members.

# VISION

To improve the quality of life for our members and embrace beneficial opportunities in a changing industry.

# VALUES

Service • Safety • Fiscal Responsibility  
Integrity • Communicate & Educate  
Commitment to Community



# Your Board of Directors



**Front Row** Marie Katterhagen, *Secretary*  
(left to right) Tom Brichacek, *Vice Chair*  
Kristine Spadgenske, *Director*

**Back Row** Gene Kern, *Director*  
(left to right) Dale Adams, *Treasurer*  
Miles Kuschel, *Chair*  
Michael Thorson, *Director*

# Your Employees

**Pictured (left to right):** Luke Wilhelmi, Jon Grenier, Jason Orlando, Lori Tumberg, Lisa Reed Krump, Jason Ohrmundt, Lisa Graba-Meech, Tyler Fisher, Josh Byman, Scott Kangas, David Snyder, Jamie Line, Brayden Gwiazdon, Abby Harrison, Allison Uselman, Brady Erickson, Melissa Evans, Kallie Van De Venter, Lori Redetzke, Kristen Paurus, Mary Williams, Mike Orlando, Greg Jacobson, Trent Walter, Kevin Lupkes, Dan Carlisle, Todd Miller, Heidi Smith.



# Pine to Prairie News

A monthly publication for  
members and friends of



**Todd-Wadena**  
ELECTRIC COOPERATIVE

[www.toddwadena.coop](http://www.toddwadena.coop)

**Office Hours:** 8:00am - 4:30pm  
Monday - Friday

**Telephone:** (218) 631-3120 or  
(800) 321-8932

**Email:** [todd-wad@toddwadena.coop](mailto:todd-wad@toddwadena.coop)

**Address:** 550 Ash Avenue NE  
P.O. Box 431  
Wadena, MN 56482

## BOARD OF DIRECTORS

Miles Kuschel, Chair  
Tom Brichacek, Vice Chair  
Marie Katterhagen, Secretary  
Dale Adams, Treasurer  
Michael Thorson, Director  
Gene Kern, Director  
Kristine Spadgenske, Director

Daniel Carlisle, President/CEO &  
General Counsel

## LOCAL ELECTRICAL INSPECTORS

Todd County:

Troy Bak (320) 760-1017

Wadena County:

Adam Sorensen (320) 304-3927

District 5 (*Todd County*):

Mark Hunter (320) 616-5574

District 6 (*Wadena County*):

Sheldon Monson (218) 689-3260

### **If your electric power goes out:**

First, make sure the problem is not on your side. (*Members may be billed for service calls if the problem is caused by their own equipment.*) Check fuses and circuit breakers in your home and by the meter pole. (*Call us for help, if necessary.*)

Second, check with your neighbors to see if they have power. Then call Todd-Wadena to report the problem. Give your name and account number. Then report any tree branches, twisted wires, broken poles, and whether or not your neighbors are also out of power.

### **Before digging call:**

Gopher State One-Call  
811 or (800) 252-1166

Find us on  

[www.facebook.com/toddwadenaelectriccooperative](http://www.facebook.com/toddwadenaelectriccooperative)  
[www.instagram.com/twec.coop](http://www.instagram.com/twec.coop)

## Todd-Wadena Electric Cooperative

P.O. Box 431

Wadena, MN 56482

Printed on recycled paper.

PRSR STD  
U.S. Postage

**PAID**  
DPC

## Member Registration Card



Present this card at the *Member Registration* table to be eligible for door prizes and the membership dinner. If you did not vote online or by mail, you will also need this to receive an on-site election ballot.

## April Reader's Contest

1. How much of your dollar goes to power cost? \_\_\_\_\_¢
2. What were the G&T Capital Credits in 2021? \$ \_\_\_\_\_
3. How many new services were installed in 2021? \_\_\_\_\_



Name: \_\_\_\_\_

Your TWEC Account Number: \_\_\_\_\_

For your chance to be entered in a drawing to **win a \$10 credit** on your bill, correctly answer the questions and include with your TWEC bill. Mail to *TWEC, P.O. Box 431, Wadena, MN 56482*. Or email the answers to [mbrservices@toddwadena.coop](mailto:mbrservices@toddwadena.coop) with the subject line "*Reader's Contest*". Be sure to include your name and TWEC service address. Entries must be received by April 25<sup>th</sup>. **Ken Derby of Wadena was the winner of our March Reader's Contest.**

## Upcoming Events

**Lineworkers Appreciation Day • April 11<sup>th</sup> // #ThankALineworker**  
**Good Friday • April 15<sup>th</sup> // Office closed.**  
**Annual Meeting • April 19<sup>th</sup> at 5:30 p.m. // See you there!**