



Todd-Wadena
ELECTRIC COOPERATIVE

Pine to Prairie
December 2021
www.toddwadena.coop



Holiday Open House

Thursday, December 16th
1 p.m. to 3:30 p.m.

Todd-Wadena Electric
Cooperative Garage

We will have coffee, hot chocolate, and cookies, along with office tours (1 p.m. to 3:30 p.m.) on Thursday, December 16th!

We are also holding a food drive, so if you can, please bring along a non-perishable food item to donate to members in need.



2022 Calendar Pick Up Locations

Stop by to pick up a calendar at our office or at one of our pick up locations throughout the service territory! Limited quantities are available at each location. *Thank you to all our members who submitted photos!*

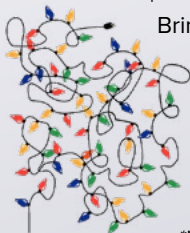
- Browerville**
Pro-Ag Farmers' Co-op
501 Railroad Ave.
- Long Prairie**
Long Prairie Chamber of Commerce/
Great River Regional Library's Foyer
43 3rd St. N.
- Menahga**
A Clean Plate Local & Organic Grocery
13 Birch Ave. SE
- Staples**
True Value // 205 Warner Road NE

Selected Photo Winners

- January**
Rita Tepley, *Eagle Bend*
- February**
Janice Winter, *Bertha*
- March**
Tim Sly, *Wadena*
- April**
Kathleen Shaffer, *Staples*
- May**
Lindsey Maki, *Menahga*
- June**
Crystal Wiese, *Verndale*
- July**
Angie Hartwig, *Motley*
- August**
Jill Opdahl, *Browerville*
- September**
Mary Jonson, *Clarissa*
- October**
Missy Aaker, *Willmar*
- November**
Missy Beyatt, *Bertha*
- December**
Kathy Wellmann, *Verndale*
- Cover photo**
Roberta Brinkman, *Verndale*



Drop Off Your Old String Lights



Bring your non-functioning lights and extension cords to our office for **Bites for Lights!** We're teaming up with Brainerd's *Sunrise Sertoma Club's Bites for Lights* this year. All the string lights and old extension cords will be recycled and will stay out of landfills. You can drop off your donation in our lobby, 8:00 a.m. - 4:30 p.m., Monday - Friday.

**We are accepting only string lights and extension cords.*

Holiday Hours

Our office will be closed on Friday, December 24th for **Christmas Eve**, and Friday, December 31st for **New Year's Eve**. Happy holidays!

Caring for Our Community

As the year comes to a close and the holiday season is here, Todd-Wadena Electric Cooperative (TWEC) wants to take this opportunity to let you, our members, know how much we appreciate you. All of the TWEC employees and Board of Directors wish you and your family warm wishes this holiday season and a happy and prosperous new year!

Here at Todd-Wadena, caring for our membership and community is a year-round commitment.

At the center of the way we operate are seven cooperative principles. These were developed in the 1840s by the Rochdale Society and are still used by cooperatives today. **Concern for Community**, one of the principles, comes with the belief that a business is only as strong as the community it serves. We take this principle very seriously – focusing on our members' needs and working for the sustainable development of our communities. When our local communities thrive, we all thrive.

Throughout the year, TWEC encourages member participation in Operation Round Up, a program that has given thousands of dollars to non-profits and organizations in our region. We also have a community ambassador program where our employees are encouraged to volunteer for an organization they are passionate about in our community. We assist many of our local town summer celebrations with donations and in-kind services. We also support a variety of youth programs in the area, making sure our youth have access to great education and extracurricular activities.

Just in the last month, TWEC was able to help the City of Wadena hang the Christmas lights at Burlington Northern Park. Our linemen assisted the Wadena County Dairy Association with putting up a new sign just east of Wadena, using our equipment to dig the poles in. We also worked with Barn Quilts of Central Minnesota to hang a new barn quilt for the trail and are appreciative that TWEC will soon have its own barn quilt. We worked with the organization to mock up a design with our logo and will proudly showcase it at our headquarters building.

This holiday season and throughout the year, TWEC is dedicated to being more than just a power supplier in rural Minnesota. We are here to serve you and support the communities we live in.



Daniel Carlisle
President/CEO &
General Counsel

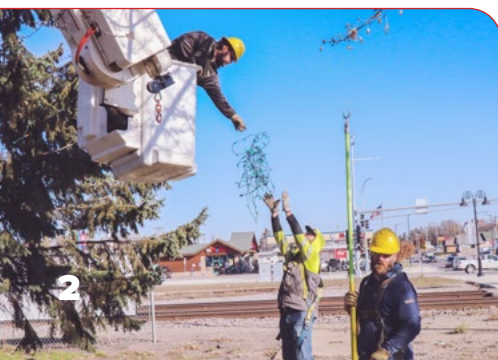
Daniel Carlisle
President/CEO & General Counsel

Board Minutes

Highlights from the October 27th, 2021, regular board meeting:

- CEO Dan Carlisle recently attended the Gettysburg Leadership Conference and shared it was a fantastic conference with a lot of substance and skilled instructors.
- Lisa Graba-Meech, CFO, presented the September financials to the board. Monthly kWh sales were 0.8 percent under budget. Energy revenue was 0.13 percent over budget. September's purchased power expense was 0.3 percent under budget. Tier is 1.50 and Equity is 44.22.
- The 2021 TWEC Capital Credit Retirement was approved as presented (TWEC \$741,666; GRE \$262,500).
- Member and Energy Services Manager Allison Uselman mentioned how the Nominating Committee kick-off meeting went smoothly and was received very well by old and new committee members.
- Operations Manager Todd Miller noted that the new services count is surpassing TWEC's 2021 goal, with an estimated 140 new services by the end of the year. He also gave an update on the status of the rebuild of Leaf River Substation.
- Graba-Meech updated the board on the new Cold Weather Rule.
- Board Member Mike Thorson gave the Great River Energy (GRE) report. September financials were strong, with margins coming in ahead of budget.
- Board Chair Miles Kuschel provided a legislative update and highlighted several industry business matters.

Hanging lights at Burlington Northern Park



L to R: Allison Uselman, John Trout, Mary Trout, Karyl Richter, Bruce Richter

Helping Barn Quilts of Central Minnesota



Look for Your Capital Credits

Members who were active (*had patronage*) in 2006 and 2007 are receiving **\$741,666** of capital credits from TWEC. Members who were active during 1988-1990 are receiving **\$262,500** in retirements from Great River Energy, our wholesale energy provider. The capital credit retirements will appear as a credit on active members' December billing statements.

2022 Scholarships

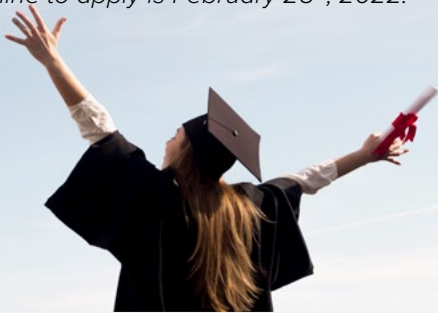
GRADUATING HIGH SCHOOL SENIOR SCHOLARSHIP

Todd-Wadena Electric Cooperative will award up to four \$1,000 scholarships to 2022 graduating high school seniors for their first year (freshman) as a college student.

POWER UP ADULT SCHOLARSHIP

Todd-Wadena Electric Cooperative will award up to two \$1,000 Power Up Adult Scholarships to adult students headed to college for the first time, returning to complete an interrupted education, or looking to return to college to improve their career opportunities.

Applications are available at www.toddwadena.coop. The deadline to apply is February 25th, 2022.



Where do funds for the scholarships come from?

Scholarships are made available with unclaimed capital credits. After a period of seven years, Minnesota law allows cooperatives to use unclaimed capital credits for charitable or educational purposes. Each year, Todd-Wadena is able to use the unclaimed capital credits to offer student scholarships in our service area. This year, Todd-Wadena Electric Cooperative is offering up to four \$1,000 scholarships to graduating high school seniors, and up to two \$1,000 scholarships to adult students.

Nominating Committee Meeting in January

The 2022 Nominating Committee is scheduled to meet on **January 20th** to make selections for director elections taking place at TWEC's 2022 annual meeting. This year, the three-year terms of Marie Katterhagen and Mike Thorson will expire at the Annual Meeting on April 19th, 2022.

The grassroots participation in nominating and electing directors is one of the most important powers that you, the member-owners of Todd-Wadena Electric Cooperative, have to guide the decisions of your cooperative.

Any member interested in becoming a director candidate may contact a member of the nominating committee or the Cooperative office by either calling TWEC at (218) 631-3120 or (800) 321-8932.

2022 Nominating Committee

Name	City/Community	Phone Number
Gerald Anderson	Eagle Bend	(218) 738-4609
Jerry Miller	Sebeka	(218) 837-5690
Gary Stracek	Browerville	(320) 594-2960
Wally Wiese	Verndale/Hewitt	(218) 639-6348
Ray Gildow	Staples	(218) 821-8848
Annette Adamietz	Verndale	(218) 445-5190
Ray Avelsgard	Nimrod/Sebeka	(307) 624-0237
Erich Heppner	Staples	(952) 807-3279
Samantha Krause	Staples	(507) 766-0238
Heather Gilreath	Nimrod/Sebeka	(218) 841-0309

Members can also contact Kallie at the Cooperative office at (218) 631-3120 or (800) 321-8932 or at kvandeventer@toddwadena.coop.



To become a nominee for Director you must:

- ▶ Be a member in good standing of Todd-Wadena Electric Cooperative.
- ▶ Have a primary address on Todd-Wadena Electric Cooperative's lines.
- ▶ Not be an employee or have been an employee of the Cooperative within the last three years.
- ▶ Not be a close relative of an employee.
- ▶ Have not been convicted of a felony within the last three years.
- ▶ Agree to regularly attend all board, regular and special, members' meetings.
- ▶ Not be employed by, materially affiliated with, or have a material financial interest in any individual or entity which is either directly or substantially competing with the Cooperative, selling goods or services in substantial quantity to the Cooperative, or possess a substantial conflict of interest with the Cooperative.

Try Our Electric Thermal Storage (ETS) Water Heating Program

Todd-Wadena Electric Cooperative's ETS water heating program lowers energy costs by heating water during off-peak hours (10 p.m. – 6 a.m.), when electric costs are the lowest. The program includes the super-efficient **Marathon** brand water heater. It stores enough hot water during the off-peak period to provide hot water from storage to use during the 16-hour on-peak portion of the day. The ETS water heating program is recommended for smaller households.

When enrolling in the program, members receive an 85-gallon Marathon water heater, valued at over \$1,100, for just \$330*. A larger, 105-gallon Marathon water heater is available for \$420*. Members who

have a large capacity 80-gallon or more tank or a two-tank system also qualify for the program. A separate meter is required for the ETS water heating program. TWEC provides the socket, and members need to contact their electrician to wire it.

Members enrolled in the ETS water heating program will also receive a special storage heat rate of 4.3¢/kWh for water heating. A \$2 monthly meter fee is added to the bill as long as the member is enrolled in the program. Members must remain on the ETS water heating program or peak shave water heating program with a Marathon tank.



*** New program enrollment only.**

Compare Peak Shave and ETS

Our **Peak Shave Water Heating program** controls water heaters several hours at a time when electric use and wholesale cost are at their highest. Members receive an **\$8 credit** every month after being on the program for 60 months (only 36 months for new construction or gas switching).

Our **ETS Water Heating program** heats water during off-peak hours (10 p.m.–6 a.m.), when electric costs are the lowest. It stores enough hot water during the off-peak period to last through the 16-hour on-peak portion of the day (*best for smaller households*). Members receive a special storage heat rate of 4.3¢/kWh for water heating (plus a \$2/mo meter fee**).

Costs

Based on 350 kWh per month of water heating.

Peak Shave Rate:	\$0.114/kWh* <i>(with \$8/mo credit)</i>
Water Heating Monthly Total:	\$31.90

* GENERAL SUMMER RATE (not including the Power Cost Adjustment).

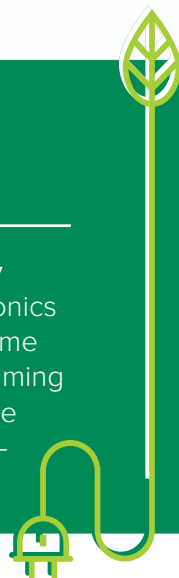
Electric Thermal Storage Rate:	\$0.043/kWh <i>(with \$2/mo charge)</i>
Water Heating Monthly Total:	\$17.05

** A separate meter is required for the ETS water heating program. TWEC provides the socket. Members will need to contact their electrician to wire it.

Energy Efficiency Tip of the Month

Heading out of town for the holiday season? Remember to unplug electronics that draw a phantom energy load. Some gadgets like TVs, phone chargers, gaming consoles and toothbrush chargers use energy when plugged into an outlet—even when they're not in use.

Source: www.energy.gov



Has your organization applied for an Operation Round Up grant? The next deadline is January 15th. For more details and to download a fillable application, visit our website.



www.toddwadena.coop/operation-round-up

Todd-Wadena Electric Cooperative is an equal opportunity provider and employer.

What is Load Management?

As the days get colder and temperatures drop, many of us are thankful for our heating systems – however, not always the bill that comes with them. If you are looking to stay warm and comfortable this winter season, but also want to save money, Todd-Wadena Electric Cooperative's off-peak load management heating programs are a great option.

The Cooperative offers two load management programs for heating: **Electric Thermal Storage (ETS)** and **Dual Fuel**. ETS can either be used with ETS storage furnaces or true storage-floor heat systems. For true ETS, the unit will charge daily. Charging occurs overnight during the off-peak hours of 10 p.m. – 6 a.m. This provides enough heat from storage to heat your home during the 16-hour

on-peak portion of the day. Members enrolled in the program receive a special rate of **4.3 cents/kWh** (*more than half off TWEC's general service rate*).

The Dual Fuel program combines two heating sources to best fit your budget and heating needs. An example would be using an electric heating source such as baseboard heating, a cold climate air source heat pump (ASHP), or plenum heater paired with a propane or fuel oil furnace. TWEC offers a low rate of **5.1 cents/kWh** for members on this program, again almost half the cost of the general service rate. Dual Fuel is a controlled heating program where the Cooperative sends a message to the receiver to control the unit during peak energy use times. Peak energy events typically occur a few times per month when temperatures are at their highest and lowest.

How is it Possible for TWEC to Offer These Rates on Heating?

1 Home uses electric heat at lower off-peak rate under normal conditions.

2 Electricity demand exceeds economical energy purchases.

3 House is automatically switched from electric to backup heating source.

4 Load control management avoids uneconomical energy purchases and maintains system reliability.

Load management is a method the Cooperative uses to ensure reliable and affordable electricity. By asking our members to operate their heating systems during off-peak hours, we shift use away from hours when the cost of electricity is most expensive, thus saving our members money.

To better understand this concept, think about a very cold Minnesota winter day. Heating systems are running constantly at their max. Then add in typical energy use such as running an electric dryer, electric range, and holiday lights. During that same time, commercial industries are ramping up production, and many agricultural related industries need more electricity. As all of this happens across the grid, the load curve grows.

The load curve above represents the growing electric use over this time period. When the curve reaches its peak is when electricity is the most expensive. As we approach these peaks, TWEC is able to send a message to the receivers of members who are enrolled in a program to conserve energy. As you can see in the last load curve, controlling allows TWEC to shave that peak and avoid higher costs.

In addition to heating, Todd-Wadena offers other load control programs. Members can opt into programs for water heating, cooling, irrigation, commercial and industrial accounts, and electric vehicle charging. The Cooperative also offers several one-time rebates for installing equipment and enrolling in our programs.

To learn more, call us at (218) 631-3120 or visit www.toddwadena.coop.



Receive Dual Fuel Load Control Notifications with SmartHub

Members who participate in our **dual fuel load management program** can receive a notification of control events! To manage or receive notifications from Todd-Wadena Electric Cooperative, you will need a SmartHub account.

Visit www.toddwadena.coop/loadcontrolnotifications to get signed up today!

Using Portable Space Heaters Wisely

Electric space heaters can be a convenient heating supplement when used periodically to take the chill off a blustery day. However, they become increasingly ineffective for heating as the space gets larger. They can also be much more expensive to operate long-term as they are not eligible for lower, off-peak kWh pricing.

To estimate the cost of running a space heater, we used TWEC's **Kill-A-Watt** meter to figure out how many kWhs our space heater was using. Our heater used 1,500* watts on the high setting. To calculate our usage we used this formula: $\text{Watts}/1,000 \times \text{Hours} = \text{kWh usage}$.

*Check your space heater to see how many watts it uses.



We wanted to know the cost of usage for one hour on high and our usage came to 1.5 kWh. When multiplied by TWEC's 11.5¢ rate per kilowatt-hour, we found it costs 17.3¢ per hour to run our heater on high.

$(1,500 \text{ watts}/1,000) \times 24 \text{ hours a day} \times 11.5\text{¢ per kWh} = \mathbf{\$4.14}$
 $\$4.14 \times 30 \text{ days} = \mathbf{\$124.20}$

Now we can see what impact a space heater is having on our monthly bill. In this example, a space heater that uses 1,500 watts and operates 24 hours each day at 11.5¢ per kilowatt-hour costs \$4.14 per day to operate. If you run it for 30 days, that would add \$124.20 to your monthly bill!

ELECTRIC HEATER SAFETY TIPS

- Keep the heater at least 3 feet from flammable items such as curtains, furniture, or bedsreads.
- Keep children and pets away from space heaters.
- Never leave a space heater unattended.
- Never go to sleep with a space heater on.
- Never use or store flammable liquids near a space heater.
- Do not use a heater in a bathroom—it's a high-moisture area that could cause damage.
- Always keep heaters a safe distance from water to prevent electrocution.
- Do not use an extension cord with a space heater.
- Do not use the heater to dry clothes.

The Holiday Elves Are Out!

Use our Co-op Connections card at local businesses and receive special discounts. View the full list of local deals at www.toddwadana.coop!



Hometown Crafts

111 S. Jefferson, Wadena

10% off regular priced merchandise. Not valid with other coupons.



1776 Clothing Company

102 Jefferson St. S., Wadena

10% off total purchase of regular priced items.



Konetzko's Meat Market

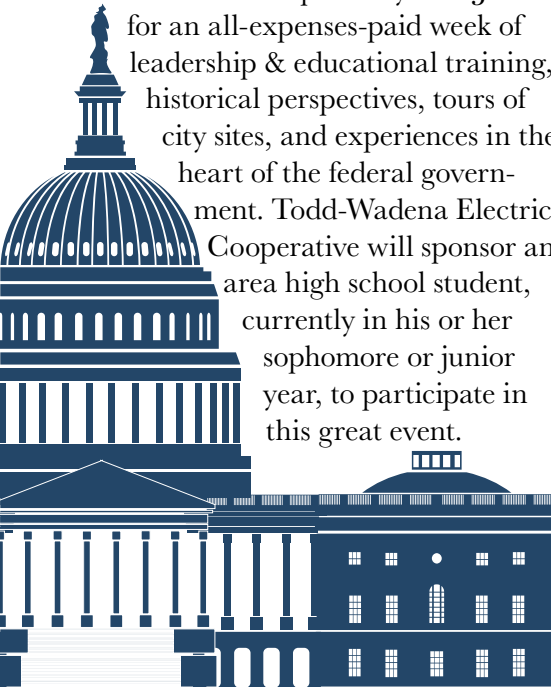
516 Main St. S., Browerville

\$2 off \$20 purchase of meat sticks OR \$2 off 1 lb. purchase of beef jerky. One discount per visit. Offers cannot be combined. Not valid with any other offers.

Youth Tour 2022

Our Washington D.C. trip is back on for 2022!

The National Rural Electric Cooperative Association and Minnesota Rural Electric Association plan to welcome cooperative-sponsored students to the nation's capital city next June for an all-expenses-paid week of leadership & educational training, historical perspectives, tours of city sites, and experiences in the heart of the federal government. Todd-Wadena Electric Cooperative will sponsor an area high school student, currently in his or her sophomore or junior year, to participate in this great event.



Learn more about this opportunity: including applicant qualifications and how to apply at www.toddwadena.coop

Holiday Electrical Safety Tips

The holiday season is a festive time of year! Remember to keep electrical and fire safety in mind as you decorate your home.



DECEMBER READER'S CONTEST

For your chance to be entered in a drawing to **win a \$10 credit** on your bill, correctly answer the questions and include with your TWEC bill. Mail to TWEC, P.O. Box 431, Wadena, MN 56482. Or email the answers to mbrservices@toddwadena.coop with the subject line "Reader's Contest". Be sure to include your name and TWEC service address. Entries must be received by December 25th.

Myron Wicklund of Wadena was the winner of our November Reader's Contest.

1. We're collecting old holiday string lights and extension cords for _____ for Lights.
2. TWEC will sponsor a sophomore or junior for a trip to Washington D.C. for the 2022 _____ Tour.
3. If you ran a space heater 24 hours a day for 30 days, it would add an additional \$_____.20 to your bill.



Name: _____ Your TWEC Account Number: _____

Mission Statement // To be a trusted partner providing safe, reliable, and affordable energy options to our members.

Vision Statement // To improve the quality of life for our members and embrace beneficial opportunities in a changing industry.

Values // Service • Safety • Fiscal Responsibility • Integrity • Communicate & Educate • Commitment to Community

Pine to Prairie News

*A monthly publication for
members and friends of*



Todd-Wadena
ELECTRIC COOPERATIVE

www.toddwadena.coop

Office Hours: 8:00am - 4:30pm
Monday - Friday

Telephone: (218) 631-3120 or
(800) 321-8932

Email: todd-wad@toddwadena.coop

Address: 550 Ash Avenue NE
P.O. Box 431
Wadena, MN 56482

BOARD OF DIRECTORS

Miles Kuschel, Chair
Tom Brichacek, Vice Chair
Marie Katterhagen, Secretary
Dale Adams, Treasurer
Michael Thorson, Director
Gene Kern, Director
Kristine Spadgenske, Director

Daniel Carlisle, President/CEO &
General Counsel

LOCAL ELECTRICAL INSPECTORS

Todd County:

Troy Bak (320) 760-1017

Wadena County:

Adam Sorensen (320) 304-3927

District 5 (Todd County):

Mark Hunter (320) 616-5574

District 6 (Wadena County):

Sheldon Monson (218) 689-3260

If your electric power goes out:

First, make sure the problem is not on your side. (*Members may be billed for service calls if the problem is caused by their own equipment.*) Check fuses and circuit breakers in your home and by the meter pole. (*Call us for help, if necessary.*)

Second, check with your neighbors to see if they have power. Then call Todd-Wadena to report the problem. Give your name and account number. Then report any tree branches, twisted wires, broken poles, and whether or not your neighbors are also out of power.

Before digging call:

Gopher State One-Call
811 or (800) 252-1166

Find us on  

www.facebook.com/toddwadenaelectriccooperative
www.instagram.com/twec.coop

Todd-Wadena Electric Cooperative

P.O. Box 431

Wadena, MN 56482

Printed on recycled paper.

PRSR STD
U.S. Postage

PAID
DPC

Happy Holidays
From all of us at Todd-Wadena Electric Cooperative

Board of Directors

Miles Kuschel
Tom Brichacek
Dale Adams
Marie Katterhagen
Kristine Spadgenske
Mike Thorson
Gene Kern

Employees

Josh Byman	Jason Ohrmundt
Dan Carlisle	Jason Orlando
Brady Erickson	Mike Orlando
Melissa Evans	Kristen Paurus
Tyler Fisher	Lori Redetzke
Jon Grenier	Lisa Reed Krump
Abby Harrison	Heidi Smith
Lisa Graba-Meech	David Snyder
Brayden Gwiazdon	Lori Tumberg
Greg Jacobson	Allison Uselman
Scott Kangas	Kallie Van De Venter
Jamie Line	Trent Walter
Kevin Lupkes	Luke Wilhelmi
Todd Miller	Mary Williams