



2022 Nominating Committee

The grassroots participation in nominating and electing directors is one of the most important powers that you, the member-owners of Todd-Wadena Electric Cooperative, have in order to guide the decisions of your cooperative.

Part of this participation involves the *Nominating Committee*, which is made up of between 5 and 11 members who are selected so that the geographical territory is well represented. This committee then prepares a list of nominations for the next election of the Board of Directors. Members may contact the committee if they are interested in being a director, and the committee may also recruit members to run in the election.

→ (2022 Nominating Committee is continued on page 3)

Capital Credit Retirement

As a member, you earn capital credits each year based on your patronage. This means if you purchase more electricity in a year, your allocation of capital credits is more for that year. Your Board of Directors makes a decision annually on whether to retire (or pay out) old capital credits based on the financial health of the cooperative and provisions of the by-laws.

In 2021, the TWEC Board of Directors approved the retirement of **\$742,000** of capital credits for 2006 and a portion of 2007; and from our wholesale energy provider, Great River Energy (GRE), a retirement of **\$262,000** of capital credits will be refunded to TWEC members who had patronage from 1988-1990.

Active members: your capital credits will be applied to your account as an **energy credit** on your December bill¹.

Desc.		Rate: General Service	
Days	Reading	Previous Rdg	Usage
30	2399	1234	1165
Detail of Charges:			
Basic Charge			\$23.00
Energy Charge (1,165 kWh @ 0.104 per kWh)			\$121.16
Power Cost Adj (1,165 kWh @ 0.01156 per kWh)			\$13.47
MN Sales Tax (all taxable meters)			\$10.29
Becker County Sales Tax			\$0.75
Water Storage House Cr			\$8.00CR
Apply Capital Credit Refund			\$30.00CR
Total Electric Charges - Meter 123456			\$130.67
Total This Service			\$130.67

¹ **Some may ask why we aren't sending a check and are instead doing the retirement as an energy credit:** There are many benefits to an energy credit versus a check. It saves the Co-op money on mailing and printing costs. It solves issues where checks were never delivered or were significantly late by mail. The credit will be conveniently added on your December bill.



Back Row: Gerald Anderson, Ray Gildow, Ray Avelsgard, Wally Wiese, Erich Heppner **Front Row:** Samantha Krause, Gary Stracek, Heather Gilreath, Annette Adamietz
Not pictured: Jerry Miller

Energy Transition Accelerating

In 2007, Minnesota set a goal to reduce carbon dioxide emissions in the state by 80 percent by the year 2050. Todd-Wadena Electric Cooperative is proud to be part of a group of cooperatives that is on track to achieve that goal while keeping energy reliable and affordable. Our wholesale power provider, Great River Energy (GRE), anticipates its direct carbon dioxide emissions will drop below the state target far ahead of schedule.

This is happening because our long, gradual journey toward cleaner electricity will accelerate dramatically in the coming years.

GRE will add 900 megawatts of wind energy, develop a long-duration grid-scale battery, and greatly reduce its dependence on coal. Later this year, GRE plans to close on the sale of the 1,100-megawatt Coal Creek Station power plant. Through an agreement with the purchaser, GRE will initially purchase coal powered energy from the purchaser, then will decrease its purchase of the plant's output over the course of approximately 10 years. Specifically, GRE will purchase 1,050 megawatts of power from the purchaser for approximately two years after the closing of the transaction, followed by a huge reduction, resulting in the purchase of 300 megawatts for approximately eight years. In addition, the plant's new owner plans to develop carbon capture and storage at the facility.

This journey is complex and each of these steps are important as we strive to reduce emissions and maintain affordability without affecting reliability on the electric system.

Members have taken an interest in the future and past of Coal Creek Station. Some have expressed concerns related to grid reliability because of Coal Creek Station being sold. Others have expressed regret that it will remain a resource at all, regardless of the anticipated reduced energy output and the prospects of carbon capture. Both of those views — and everything in between — were considered by the management and board at Todd-Wadena Electric Cooperative.

We believe our decision to support the sale of Coal Creek Station was the right thing to do. Our members will receive a return on their investment in Coal Creek Station as GRE projects that the transaction could save its members approximately \$130 million compared with shutting down the plant. We also believe that by adding additional sources of generation such as wind and relying on our dual fuel peaking stations that we will be able to continuously provide reliable and affordable energy to our members.



Daniel Carlisle
President/CEO &
General Counsel

Board Minutes

Highlights from the September 27th, 2021, regular board meeting:

- CEO Dan Carlisle shared a few highlights from a recent member managers group meeting with Great River Energy (GRE). The meeting included an update on the sale of Coal Creek Station. He also addressed some of the key topics from the fall MREA CEO conference.
- Lisa Graba-Meech, CFO, presented the August financials to the board. Monthly kWh sales were 12 percent over budget. Energy revenue was 9 percent over budget. August's purchased power expense was 21 percent over budget. Tier is 1.40 and Equity is 43.55.
- Graba-Meech also presented the 2022 Wages and Benefits proposals to the board and provided directors with the full 2020 CFC Key Ratio Trend Analysis.
- Member and Energy Services Manager Allison Uselman shared that TWEC's recent Pancake Breakfast and Open House event hit an all-time high with 410 attendees. She also gave a recap of her presentation at the Connecting Entrepreneurial Communities Conference.
- Operations Manager Todd Miller mentioned how new service installations are finally starting to slow down and the construction for the new Leaf River Substation has begun.
- Board Member Dale Adams gave the STAR Energy report. STAR will celebrate its 25th anniversary in 2022 and planning for that event is underway.
- Board Member Mike Thorson gave the GRE report. August financials showed another strong month.
- Board Chair Miles Kuschel noted how pleased he was with TWEC's EV Ride & Drive event held during the Pancake Breakfast. He said members were very involved and asking in-depth questions.

Daniel Carlisle
President/CEO & General Counsel

2022 Nominating Committee *(continued from page 1)*

This year, the three-year terms of Marie Katterhagen and Mike Thorson will expire at the Annual Meeting on April 19th, 2022.

Election ballots will be mailed to all members in March, along with the opportunity to vote electronically, or members may vote at the TWEC Annual Meeting.

The 2022 Nominating Committee is scheduled to meet on January 20th to make selections for the 2022 director elections. Any member interested in becoming a director candidate may contact a member of the Nominating Committee to the right.

2022 Nominating Committee

Name	City/Community	Phone Number
Gerald Anderson	Eagle Bend	(218) 738-4609
Jerry Miller	Sebeka	(218) 837-5690
Gary Stracek	Browerville	(320) 594-2960
Wally Wiese	Verndale/Hewitt	(218) 639-6348
Ray Gildow	Staples	(218) 821-8848
Annette Adamietz	Verndale	(218) 445-5190
Ray Avelsgard	Nimrod/Sebeka	(307) 624-0237
Erich Heppner	Staples	(952) 807-3279
Samantha Krause	Staples	(507) 766-0238
Heather Gilreath	Nimrod/Sebeka	(218) 841-0309

Members can also contact Kallie at the Cooperative office at (218) 631-3120 or (800) 321-8932 or at kvandeventer@toddwadana.coop.

Interested in being a director? Here's what they do.

The Board of Directors is essential to the success of the co-op. Directors attend monthly meetings to discuss issues and make decisions on behalf of the members. They attend conferences and read many reports/papers to understand the policies for which they are responsible and the issues with which they grapple. Their responsibilities include mitigating risk, setting rates, understanding power supply, strategic planning, financial decision making, promoting the Cooperative business model, gaining insights on political and environmental impacts, and meeting member expectations.



To become a nominee for Director you must:

- ▶ Be a member in good standing of Todd-Wadena Electric Cooperative.
- ▶ Have a primary address on Todd-Wadena Electric Cooperative's lines.
- ▶ Not be an employee or have been an employee of the Cooperative within the last three years.
- ▶ Not be a close relative of an employee.
- ▶ Have not been convicted of a felony within the last three years.
- ▶ Agree to regularly attend all board, regular and special, members' meetings.
- ▶ Not be employed by, materially affiliated with, or have a material financial interest in any individual or entity which is either directly or substantially competing with the Cooperative, selling goods or services in substantial quantity to the Cooperative, or possess a substantial conflict of interest with the Cooperative.

Holiday Open House

*Thursday, December 16th
1 p.m. to 3:30 p.m.*

*Todd-Wadena Electric
Cooperative Garage*

We will have coffee, hot chocolate, and cookies, along with office tours (1 p.m. to 3:30 p.m.) on Thursday, December 16th!

We are also doing a food drive, so if you can, please bring along a non-perishable food item to donate to members in need.

Note: Our offices will be closed on the following dates.

- 🕒 **November 11th** for Veterans Day.
- 🕒 **November 25th–26th** for Thanksgiving.
- 🕒 **December 9th** from 11:30 a.m.-4:30 p.m. for employee training.

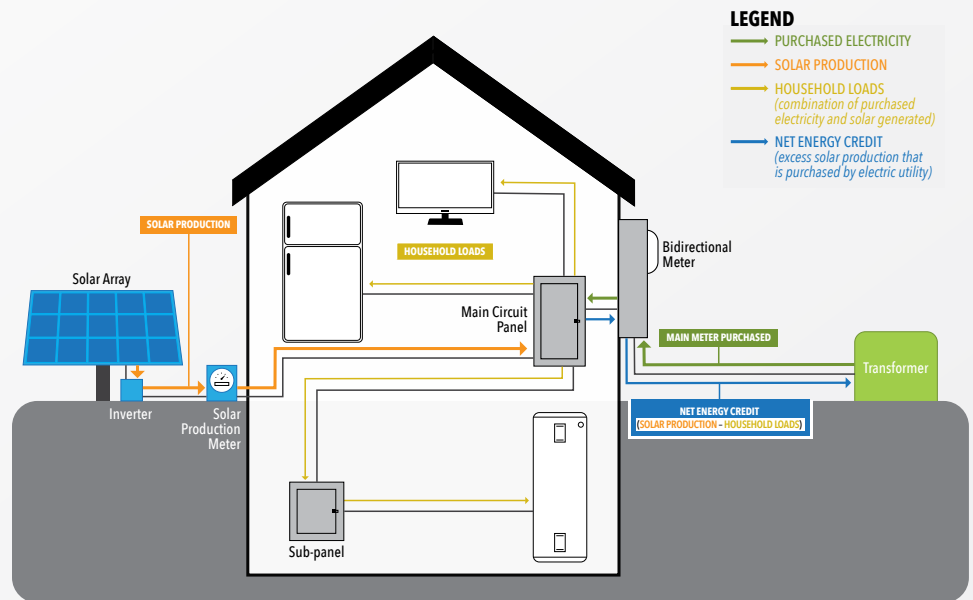
How Does Net Metering Work?

With the increasing popularity of residential solar systems, we want to help our Todd-Wadena Electric Cooperative (TWEC) members learn more about owning your own solar system and how net metering works.

Net metering is a billing mechanism that offers those with solar systems the opportunity to receive a credit for every kWh that flows back to the grid. It is a popular option with members who choose to install a residential solar system.

The size of the system is what determines if your solar system will supplement your energy bill or completely cover it. If you are looking into building a residential solar system, please reach out to us! We can send your specific energy consumption to the installer to ensure you install the correct system size to meet your needs.

Net metering is made possible by bidirectional meters provided by TWEC. These specialized meters



read the energy used by the home, which is energy flowing forward. Bidirectional meters also read excess energy flowing back to the grid from the source of production (solar), which is energy flowing backwards.

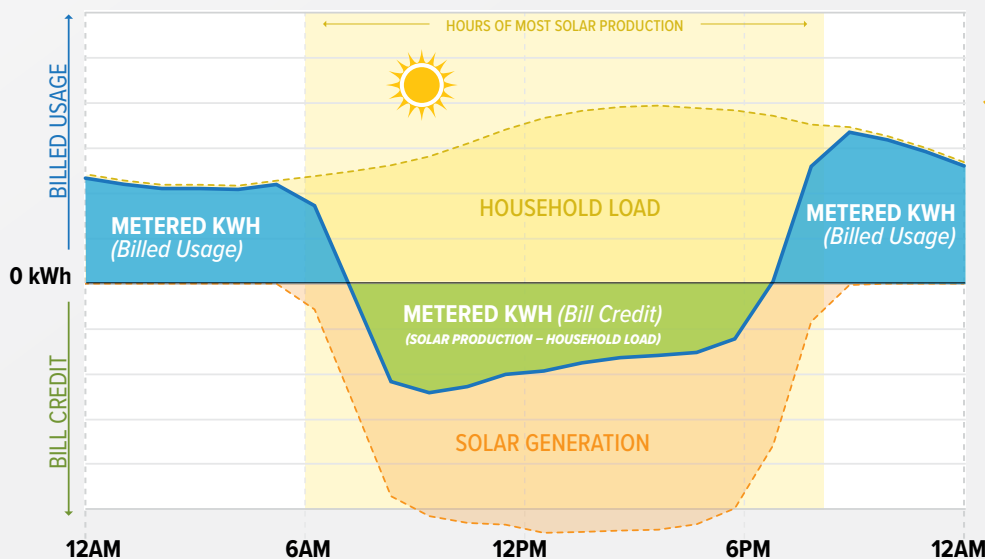
A common misconception is that you will not see an energy charge if you build a solar system large

enough to cover your home's entire energy bill. In actuality, members will always see an energy charge even if their bill has a positive credit.

Why is this the case? A solar system is only producing energy when the sun is shining. In the graph to the left, you can see how there is both usage and production during daylight hours. The net production is larger than the use, so no energy flows forwards, only backwards. During these hours, the home is making excess production that is flowing back to the grid resulting in an energy credit.

However, during the early morning and evening hours there is no generation due to the lack of sunlight. During these periods, electrons from the grid are utilized to power the home. Even if the production is large enough to create an overall credit on a member's bill, there will still be a line item on the bill where energy was used and not covered by any production.

NET METERING EXAMPLE: DAILY USAGE/GENERATION



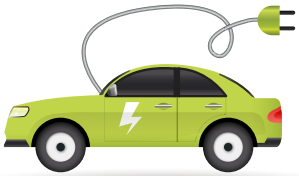
Power Grants for Commercial/Industrial Members

Are you planning any energy efficiency upgrades for your commercial/industrial business? There may be **power grants** available through Todd-Wadena Electric Cooperative (TWEC) and Great River Energy for your upgrade of *commercial lighting, motor applications, electric transportation, heating, ventilation and cooling, and commercial food service.*

Agricultural businesses that have completed energy efficiency projects for *ventilation, cooler plates, and robotic milking systems* may qualify as well. **Custom rebates are available. Contact us for any energy efficiency projects!*

Call TWEC to find out if a 2021 Power Grant is still available for qualified upgrades done this year (*all work must be completed and invoiced by 11/30/2021*), or for your upcoming projects in 2022.

Call (218) 631-3120 or (800) 321-8932 and ask to speak to Mary or Allison.



Do you have an electric vehicle (EV) charging at home that isn't on one of our EV rates? Contact us—we can help you save!

Sales Tax Exemption for Residential Electric Heat

A tax exemption is available for the months of November through April if you heat your home primarily with electricity. To determine eligibility, see the Minnesota Department of Revenue Sales Tax Fact Sheet 157 at www.revenue.state.mn.us.

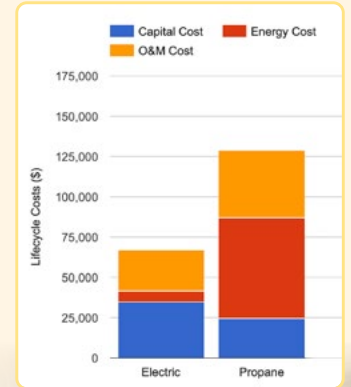
If you have questions regarding your eligibility for sales tax exemptions, please contact the *Minnesota Department of Revenue* at (651) 296-6181 or toll free at (800) 657-3777, or by email at salesusetax@state.mn.us.

To apply for a sales tax exemption for residential electric heat, please visit www.toddwadena.coop – we have an online form that can be submitted there!

BUSINESS FEATURE: AGRELIANT

Agreliant made the switch to electric forklifts after realizing they could save over \$60,000 (propane vs. electric) per forklift over a five-year period. Taking their forklift fleet electric also meant less noise, less emissions, and less maintenance.

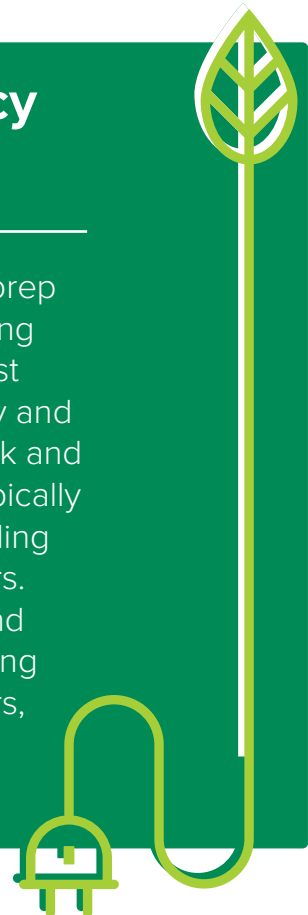
We are happy to help your company find additional savings — **call us today!**



Energy Efficiency Tip of the Month

Fall is the perfect time to prep your home for the upcoming winter chill. One of the best ways you can save energy and stay comfortable is to caulk and weatherstrip areas that typically need sealing. Start by sealing around windows and doors. Seal plumbing, ducting, and areas where electrical wiring comes through walls, floors, and ceilings for additional energy savings.

Source: www.energy.gov



TWEC Employees Jamie Line and Tyler Fisher Receive MREA's LIFEguard Award

Minnesota Rural Electric Association recognizes Jamie Line and Tyler Fisher of Todd-Wadena Electric Cooperative with a **LIFEguard Award**. In addition to their jobs at the electric cooperative, Line and Fisher serve as volunteer firefighters in the Verndale, MN community.

On April 7th, 2021, a fire was reported at 9:42 p.m. at a home in Verndale. Wadena County deputies, police, and Fisher and Line as part of the Verndale Fire Department responded to the scene.

Upon arrival, they observed flames at an upstairs window, where a child was reported to be. Several attempts were made to find the child, but heat and smoke made the area inaccessible. Fisher and Line were able to gain access through an upstairs window. They rescued the child and she was taken by ambulance to Tri-County Hospital in Wadena. She was later transported to Hennepin County Medical Center and admitted to a specialized burn unit.



Todd Miller, operations manager for Todd-Wadena Electric Cooperative says, “It just gives the co-op a great sense of pride to have people like that on your team.”

Minnesota Rural Electric Association commends Jamie Line and Tyler Fisher for their heroic measures to find the child, saving her life. Fisher and Line lived their commitment to safety at work and in their community.

CHOOSE YOUR WAY—PREPAY *Take control of your electricity use with prepaid billing!*

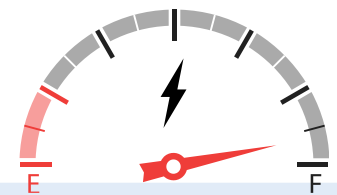
Prepaid billing, or purchasing electricity before you use it, allows you to manage your budget—paying in as much as you want at whatever time works best for you.

Traditionally, a utility bill is received at the beginning of the month for all of the electricity used in the previous month. With **CHOOSE YOUR WAY—PREPAY**, you purchase electricity before you use it, and your usage and account balance are calculated daily.

You can track your usage and balance by phone or online with your SmartHub account. There is no

deposit required to set up a prepaid account. An initial payment of \$100 is required to set up your prepaid account. After that, pay as much or as little as you like.

A good analogy for this program is putting gas in your car—you pay for the gas before you use it. You could purchase small amounts every few days, or choose to “fill up” the tank and not worry about it for several weeks (depending on how much driving you do). Members are responsible for monitoring their electric accounts via SmartHub and will not receive a monthly bill.



CHOOSE YOUR WAY—PREPAY is a great program for TWEC members who want to take control of their energy use and electric account(s). It's a helpful program for **snowbirds** who don't use much electricity during the winter and don't want to receive a monthly bill!

Great for Snowbirds!

CHOOSE YOUR WAY—PREPAY allows you to choose *how much* and *how often* you want to pay, putting you in control!

Todd-Wadena Electric Cooperative is an equal opportunity provider and employer.

Shop local this holiday season with your Co-op Connections Card!

Are you using your Co-op Connections Card to get all the savings and benefits we've reserved for our members? This program is yet another way we're looking out for our members.



BROWERVILLE

Konetzko's Meat Market // 516 Main St. S.
 \$2 off \$20 purchase of meat sticks OR \$2 off 1 lb. purchase of beef jerky. *One discount per visit. Offers cannot be combined. Not valid with any other offers.*

Pro Ag Farmer's Co-op // 501 Railroad Ave.
 10% off pet food and bird seed.

LONG PRAIRIE

Thorson's Farm Market // Highway 71
 10% off any purchase.

STAPLES

Ace Hardware // 210 2nd Ave. NE
 10% off any item \$30 or less.

Japke Decorating, Carpet & Gifts // 877 2nd Ave. NW
 10% off one item per visit on clothes or gifts.

Old 10 Apparel // 508 2nd Ave. NE
 20% off any one regular priced in-stock item (excludes letter jackets).

True Value // 205 Warner Rd. NE
 10% off any item \$50 or less.

WADENA

1776 Clothing Company // 102 Jefferson St. S.
 10% off total purchase of regular priced items.

The Gores Company // 508 S. Jefferson
 Free market analysis.

Hometown Crafts // 111 S. Jefferson
 10% off regular priced merchandise. *Not valid with other coupons.*

Lyle's Shoes // 118 Jefferson St.
 10% off regular priced in-stock item.

Over the Rainbow Floral and Gifts // 123 1st St. SW
 10% off one regular priced gift shop gift item (does not include flowers or wire services). *Not valid with any other coupons or specials.*

Wadena Eye Clinic // 222 1st St. SE
 15% off all regular priced glasses. *Not valid with insurance or other discount programs.*

Whitetail Run Golf Course // 13379 Leaf River Rd.
 Get two 18 hole green fees with 18 hole cart for \$65. *No other discounts apply.*



Make your holiday merry and bright.

LED holiday lighting is 50% off!

Now's the perfect time to make the switch from incandescent to durable, longer lasting LED holiday lights. Take advantage of this limited-time 50% discount. Offer ends Tuesday, December 28th, 2021.

Visit energywisemnstore.com/holidaylights today!



Pine to Prairie News

A monthly publication for
members and friends of



Todd-Wadena
ELECTRIC COOPERATIVE

www.toddwadena.coop

Office Hours: 8:00am - 4:30pm
Monday - Friday

Telephone: (218) 631-3120 or
(800) 321-8932

Email: todd-wad@toddwadena.coop

Address: 550 Ash Avenue NE
P.O. Box 431
Wadena, MN 56482

BOARD OF DIRECTORS

Miles Kuschel, Chair
Tom Brichacek, Vice Chair
Marie Katterhagen, Secretary
Dale Adams, Treasurer
Michael Thorson, Director
Gene Kern, Director
Kristine Spadgenske, Director

Daniel Carlisle, President/CEO &
General Counsel

LOCAL ELECTRICAL INSPECTORS

Todd County:

Troy Bak (320) 760-1017

Wadena County:

Adam Sorensen (320) 304-3927

District 5 (Todd County):

Mark Hunter (320) 616-5574

District 6 (Wadena County):



Sheldon Monson (218) 689-3260

If your electric power goes out:

First, make sure the problem is not on your side. (Members may be billed for service calls if the problem is caused by their own equipment.) Check fuses and circuit breakers in your home and by the meter pole. (Call us for help, if necessary.)

Second, check with your neighbors to see if they have power. Then call Todd-Wadena to report the problem. Give your name and account number. Then report any tree branches, twisted wires, broken poles, and whether or not your neighbors are also out of power.

Before digging call:
Gopher State One-Call
811 or (800) 252-1166

Find us on  

www.facebook.com/toddwadenaelectriccooperative
www.instagram.com/twec.coop

Todd-Wadena Electric Cooperative

P.O. Box 431

Wadena, MN 56482

Printed on recycled paper.

PRSR STD
U.S. Postage

PAID
DPC

READER'S CONTEST

For your chance to be entered in a drawing to **win a \$10 credit** on your bill, correctly answer the questions and include with your TWEC bill. Mail to *TWEC, P.O. Box 431, Wadena, MN 56482*. Or email the answers to mbrservices@toddwadena.coop with the subject line "Reader's Contest". Be sure to include your name and TWEC service address. Entries must be received by November 25th.

1. With Choose Your Way-_____, you purchase electricity before you use it.
2. Members may contact the _____ committee if they are interested in being a director.
3. Join us on December _____ for our holiday open house.

Name:

Your TWEC Account Number:

<input type="text"/>	<input type="text"/>
----------------------	----------------------

October (Co-op Month) Reader's Contest Winners

**Steven R. Hoemberg, Staples; Daniel Sweere, Bluffton;
Joan Valenta, Browerville; Delbert & Bonita Hansen, Staples;
Dianne Heldman, Staples**

