



# Pine to Prairie News

## Directors Elected at First Part of Bifurcated Annual Meeting.

The first part of the bifurcated Annual Meeting took place on Tuesday, April 28<sup>th</sup> at 5:30 p.m. at the Cooperative's office. Dan Carlisle, president and CEO served as the Parliamentarian. Board members, candidates, and the Nominating Committee Chair were present for the election results.

Tony Hoff, Marketing Manager for *Survey & Ballots Systems*, joined the

meeting virtually to announce the 2020 director election results. The three incumbents, Gene Kern, Kristine Spadgenske, and Dale Adams, were re-elected for three-year terms.

The date for the second part of the bifurcated meeting, which will include management reports and a member meal, has yet to be determined.



Gene Kern



Kristine Spadgenske



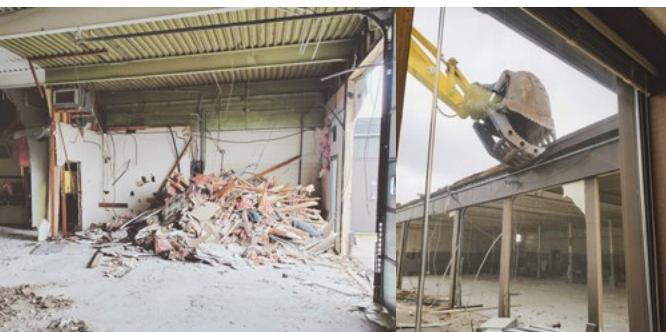
Dale Adams

*Interested in serving on Todd-Wadena Electric Cooperative's Nominating Committee?*

### **What is the Nominating Committee?**

The Nominating Committee is a group of members responsible for finding eligible candidates to run for TWEC's Board of Directors. The Nominating Committee meets twice, typically in late November or early December and again in January to select candidates for the Cooperative's director elections. Committee members are also asked to serve as tellers at the Annual Meeting. Members will receive a small per diem and paid mileage. If you are interested in serving on the 2021 Nominating Committee, please contact Kallie at (218) 631-3120 or at [kvandeventer@toddwadena.coop](mailto:kvandeventer@toddwadena.coop).

## Demolition of the Old Headquarters has Begun



# Stay Safe Around Electricity

As our nation faces the ongoing threat posed by COVID-19, people are encouraged to implement new practices for their own safety and the safety of others. Similar to COVID-19 is another threat that requires our attention

– electricity. Both are something we can't see, taste, or smell, yet they pose a danger in our daily lives. By taking appropriate measures to stay safe around electricity, we can protect our families from harm.

Each May, Todd-Wadena Electric Cooperative joins other electric cooperatives around our state and nation to recognize **National Electrical Safety Month**. We depend on electricity to power our lives, but accidents can happen when electricity is used improperly. Many electrical accidents and tragedies involve common items such as outlets, power cords, appliances, power equipment, and extension cords.

With people now spending more time in their homes, it's an excellent time to review some ways to keep your family safe around electricity:

- Frequently inspect electrical cords for broken connectors or any signs of fraying. Throw away worn cords to reduce the possibility of shock, short circuit, or fire.
- Unplug chargers when not in use. Outdoor power tools and appliances should also get unplugged when you are done using them.
- If you have young children, use plug covers in outlets. Keep cords and electrical devices out of their reach.
- Invest in smart power strips and look for EnergyStar rated appliances and devices.

If you do find yourself out and about, please remember to do your part to help protect our line crews. When you see a utility vehicle parked on the side of the road, move over when possible to give our line workers the space they need to do their job. If you come across a downed power line, please report it right away. Always treat a downed power line as though it is energized and never make contact with the line.

Stay safe and stay well!



Daniel Carlisle  
President/CEO

Daniel Carlisle  
President/CEO

### Highlights from the March 26<sup>th</sup>, 2020, regular board meeting:

- CEO Dan Carlisle went over some of the different ways TWEC is responding to the COVID-19 pandemic. He complimented the staff on doing a great job during this challenging time. Carlisle is actively in contact with fellow cooperatives, MREA, and other entities daily as the situation continues to evolve.
- COVID-19 is changing the way the Annual Meeting will be conducted. On April 28<sup>th</sup>, 2020, the election of directors will continue with three options for members to vote: online, by mail, or the drop box at TWEC. The board approved a resolution to have Survey and Ballots give results over phone and email.
- Lisa Graba-Meech, CFO, presented the February financials to the board. Monthly kWh sales were 5 percent under budget. Energy revenue was 5.5 percent under budget. February's purchased power expense was 6 percent under budget. Tier is 1.89 and Equity is 45.17.
- A corrected version of the Annual Local Democracy Filing was approved as presented.
- Member Services Manager Allison Uselman presented to the board on Distributed Energy Resources.
- Operations Manager Todd Miller shared that the stringing is completed. Outages and necessary service orders are being completed at this time.
- Matt Laughlin, from Brady Martz, presented the Auditor's Report. A review included: Auditor Communications SAS 114 Letter, Independent Auditors Reports, Balance Sheet Overview, Statement of Margins, Statement of Cash Flow, Notes of Financial Statements, Audit Procedures, Cost Per kWh Sold, Revenue Per kWh Sold, and Loan Covenants Ratios. The Auditor's Report was accepted as presented.
- Board Member Mike Thorson presented the Great River Energy (GRE) report. The February financials were not favorable. COVID-19 has GRE at a medium threat level (work from home and locked doors to the public). Thorson noted that if the situation gets worse, employees on a volunteer basis will be living out of the GRE infrastructure.
- The Building Committee handed out the tabulation of bids to board members and staff. A motion was approved to accept the total headquarters building budget of \$2.7 million, including the sign, and give Contegrity authority to prepare contracts and give them to awarded bidders.
- Board Chair Miles Kuschel noted how last month's presentations for the membership went well. The Headquarters Member Forum and the Irrigator Lunch and Learn both had great presentations.



## Where Your Electricity Comes From

When you turn the lights on in your house, there's a large and diverse system of power generation facilities throughout the region that supply electricity to help keep your home bright.



Renewable energy—including wind—represents an important and growing part of Great River Energy's power supply portfolio. The 2007 Minnesota Legislature adopted a renewable energy standard requiring that at least 25 percent of electric utility annual energy sales come from renewable energy by 2025. Great River Energy met this standard of 25 percent renewable energy in 2017 – eight years ahead of the state's requirement.

Todd-Wadena Electric Cooperative receives its wholesale electricity from *Great River Energy*, which carefully designs and maintains a diverse portfolio of power generation facilities and transmission resources in order to deliver reliable and affordable wholesale electricity to its 28 member-owner cooperatives in Minnesota.

Great River Energy voluntarily set a goal in 2018 to serve its all-requirements member-owner cooperatives with energy that is 50% renewable by 2030 and is well on its way toward meeting this new goal. The co-op currently provides energy that is 30% renewable.

Great River Energy's electricity comes from power plants, multiple wind farms, hydroelectric facilities, solar installations, and the Midwest energy market. The cooperative's power plants generate more than 2,800 megawatts of electricity, including coal-based plants that provide electricity 24/7 as well as flexible gas-fueled plants that typically run when demand for electricity is higher.

Great River Energy's portfolio is carefully crafted to be dependable at all times, while keeping wholesale rates competitive. This, in turn, helps Todd-Wadena Electric Cooperative keep the lights on 24 hours a day, 7 days a week.

## Congratulations to our 2020 Scholarship Recipients!

These students each received a \$1,000 scholarship to be used towards their secondary education.

### Graduating Senior Scholarship Recipients



**Nicholas Treinen**  
Menahga High School  
Son of David & Tracey Treinen



**Kennedy Gravelle**  
Wadena-Deer Creek High School • Daughter of John & Wendy Gravelle



**Benjamin Olander**  
Staples-Motley High School • Son of Keith & Denise Olander



**Lucas Hinojos**  
Wadena-Deer Creek High School • Son of Vince & Michelle Hinojos



**Melissa Hammer**  
Verndale High School  
Daughter of Doug & Angela Hammer

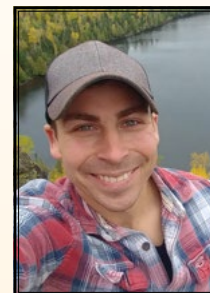


**Thomas Koval**  
Staples-Motley High School • Son of Linus & Sherri Koval

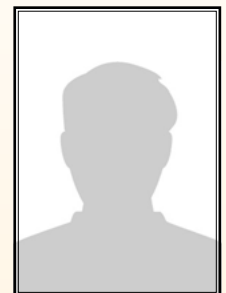
### Where Do Funds for the Scholarship Come From?

After a period of seven years, Minnesota law allows cooperatives to use unclaimed capital credits for charitable or educational purposes. Each year, Todd-Wadena is able to use the unclaimed capital credits to offer student scholarships in our service area.

### Power Up Non-Traditional Student Scholarship Recipients



**Erich Heppner**  
Staples, MN

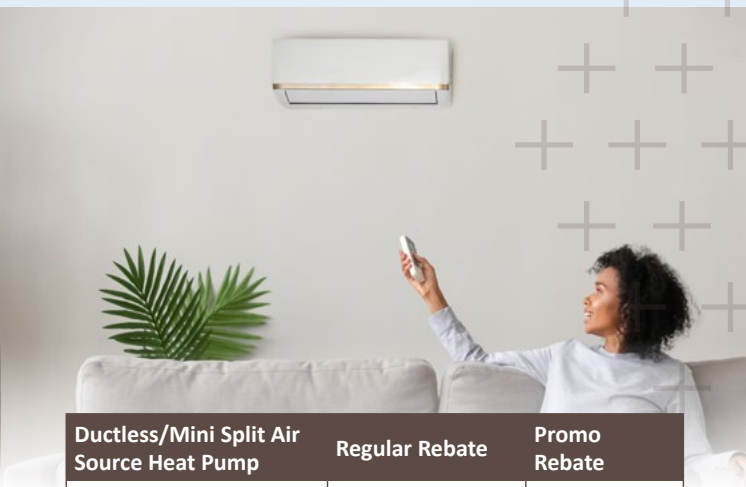


**Matthew Lillis**  
Cushing, MN

# Air Source Heat Pump Rebates

Whether temps rise or fall,  
your energy bill will stay cool.

We pumped up our rebates  
so you can shrink down your bill.



Air Source Heat Pump	Promo Rebate
≥ 8.2 HSPF	\$1,000
≥ 9.0 HSPF	\$2,000

Ductless/Mini Split Air Source Heat Pump	Regular Rebate	Promo Rebate
Delivered fuels	\$300	\$450*
Electric heat	\$500	\$750*
*Minimum HSPF ≥ 9.0		

- Rebates only apply to new systems purchased and QI installed (visit [www.toddwadena.coop](http://www.toddwadena.coop) to find a QI installer in your area)
- ASHP must be Energy Star Rated
- All rebate paperwork must be submitted by July 31<sup>st</sup>, 2020

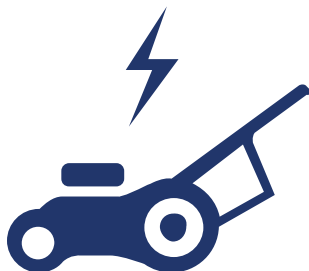
- Must be Energy Star Rated
- For new systems purchased and installed during rebate time frame
- All rebate paperwork must be submitted by July 31<sup>st</sup>, 2020

Air source heat pumps provide **home cooling and supplemental heating**, using **72% less electricity** than conventional air conditioners and furnaces.

*Promotion runs May 1<sup>st</sup>, 2020 through July 31<sup>st</sup>, 2020.*

## Yard Tool Rebates

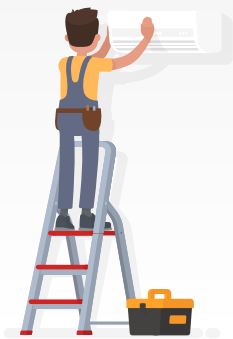
(visit [www.toddwadena.coop](http://www.toddwadena.coop) to view participating retailers list)



<b>Battery Powered Lawn Mower</b>	<b>\$100</b> (Pre-tax purchase price of \$200-\$400) <b>\$300</b> (Pre-tax purchase price of \$401 and up)
<b>Lawn Care Equipment (battery powered) Edger, Trimmers, Chainsaw, Pole Saw, or Leaf Blower</b>	<b>\$25</b> (Pre-tax purchase price less than \$100) <b>\$50</b> (Pre-tax purchase price of \$101-\$200) <b>\$100</b> (Pre-tax purchase price of \$201 and up) Rebate is not to exceed 50% of purchase price.

*\* Yard tools must be purchased at a participating retailer to be eligible for a rebate.*

# A/C Tune-up Rebate



Todd-Wadena offers a \$25 rebate for air conditioner and air source heat pump (ASHP) tune-ups! See if you qualify for this opportunity to keep your equipment running at top level!

The best way to ensure efficient operation of your central air conditioner (CAC) or air source heat pump (ASHP) is by having it tuned-up every two years. A tune-up by a service expert can improve your unit's efficiency by as much as 20 percent, extend its life, and help protect our environment.

Contact a local HVAC contractor and follow these steps to receive a \$25 rebate:

- 1) Hire the contractor (members qualify for a tune-up rebate every 2 years).
- 2) After completing the tune-up, have your contractor fill out the contractor portion of the coupon below.
- 3) Complete the member portion of the coupon.
- 4) Return the coupon to Todd-Wadena, along with a copy of the contractor invoice.

## 2020 A/C TUNE-UP REBATE APPLICATION

### Member Information

Member name: \_\_\_\_\_  
Account number: \_\_\_\_\_  
Address: \_\_\_\_\_  
City: \_\_\_\_\_ State: \_\_\_\_\_ Zip: \_\_\_\_\_  
Contact phone number: \_\_\_\_\_  
Account number: \_\_\_\_\_

I certify that the items for which I am claiming a rebate are qualifying items and are installed at the address listed above and that this address represents a valid Todd-Wadena Electric Cooperative account.

Member signature: \_\_\_\_\_

**Mail to:** Todd-Wadena Electric Cooperative  
ATTN: Mary Williams  
P.O. Box 431  
Wadena, MN 56482

### Contractor Information (to be filled out by HVAC tech)

Equipment brand: \_\_\_\_\_  
Model number: \_\_\_\_\_  
Serial number: \_\_\_\_\_  
Approximate age of unit (years): \_\_\_\_\_  
SEER rating: \_\_\_\_\_

I certify that I have completed the following on this unit:

- |   |  |
|---|--|
| <input type="checkbox"/> Clean condenser coil           | <input type="checkbox"/> Test all controls                     |
| <input type="checkbox"/> Check coolant level            | <input type="checkbox"/> Check furnace filter                  |
| <input type="checkbox"/> Check coolant pressure         | <input type="checkbox"/> Check belt, if needed                 |
| <input type="checkbox"/> Blow out drain lines           | <input type="checkbox"/> Lube motor, if needed                 |
| <input type="checkbox"/> Visually inspect entire system | <input type="checkbox"/> Educate homeowner on system operation |

Contractor signature: \_\_\_\_\_

Contractor company: \_\_\_\_\_

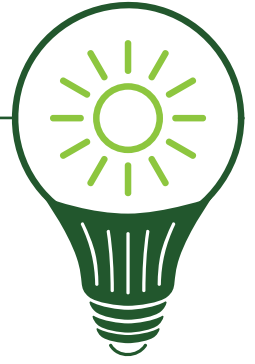


### To qualify for the tune-up rebate:

- Tune-up must be completed where electricity is supplied by Todd-Wadena Electric Cooperative.
- The central air conditioner or ASHP must be in operating condition, over three years of age, and have not had a tune-up in the last two years.
- Rebate submittal must follow the guidelines as listed.
- Program is subject to change or cancellation without notice. Call TWEC to verify rebate status.
- Program is for tune-ups only; it does not cover the cost for repairs of the air conditioner or heat pump.

# Energy Efficiency Tip of the Month

When the weather is nice, put your grill to use! During summer months, cooking outdoors is a great way to save energy and eliminate unwanted heat from cooking indoors.



## 2019 Unclaimed Capital Credits

Carol D Ackerman, *Peidmont MO*  
 James A Adamietz Estate, *Henning MN*  
 Frederick G Aderhold, *Golden Valley MN*  
 Lloyd Ahlf SR Estate, *Mountain Lake MN*  
 Arnold Akkerman, *Motley MN*  
 Terry Altermatt, *Verndale MN*  
 Darwin B Anderson, *Frazee MN*  
 Robert W Anderson, *Eagle Bend MN*  
 Harvey Arvidson, *Minneapolis MN*  
 Kimberly Baker, *Nevis MN*  
 Trista Becker, *Hackensack MN*  
 Russell Behrens Jr, *Browerville MN*  
 Deanna Bendson, *Motley MN*  
 Steven Bennett, *Wahpeton ND*  
 Roger E Berg, *Dilworth MN*  
 April J Bergeson, *Baudette MN*  
 Dave Bishop, *Milford NB Canada*  
 John Bloomquist, *St Paul MN*  
 Gregory J Bounds, *Wadena MN*  
 Roy M Bowers, *Brainerd MN*  
 Lila Boyer, *Wadena MN*  
 William A Branstner, *Muldraw OK*  
 Jamie R Brown, *Blaine MN*  
 Loren K Buchholz Jr, *Deer Creek MN*  
 Ronald Buderus, *Wisner NE*  
 Randy Butler, *Staples MN*  
 Delores Carlson, *Motley MN*  
 Eldon Carlsten, *Clitherall MN*  
 Tamara L Carmen, *Royalton MN*  
 Mike B Cedarbloom, *Park Rapids MN*  
 Michael D Christianson, *Surprise AZ*  
 Edric Clarke, *Park Rapids MN*  
 Chris Clayton, *Dilworth MN*  
 Romaine Connor, *Wadena MN*  
 Harold Crawford, *Osseo MN*  
 Crocker Brothers, *Verndale MN*  
 Raymond Crow, *Fergus Falls MN*  
 Scott Current, *Bertha MN*  
 Larry Dahl, *Wadena MN*  
 Angela Davey, *Menahga MN*  
 Michael D Denny, *Sauk Centre MN*  
 Jeannette Dickey, *Wadena MN*  
 David Downer, *Shell Lake WI*  
 Frank Doyle, *Staples MN*  
 Larry Eckre, *Menahga MN*  
 Duane F Eggerth, *Little Falls MN*  
 Betty A Elston, *Long Prairie MN*  
 Jennifer R Ferris, *Flensburg MN*  
 William J Fisher, *Fruita CO*  
 Marie Flanagan, *Long Prairie MN*  
 Bradley Frisk, *Pillager MN*

Michael W Froslic, *Buffalo MN*  
 Gordon W Fry, *Eagle Bend MN*  
 Ronald G Gedicke, *Clarissa MN*  
 Mark Geraets, *Browerville MN*  
 Jerome L Gettel, *Park Rapids MN*  
 Thomas J Girtz, *Eden Prairie MN*  
 Eugene E Goble, *Staples MN*  
 Daniel Gravalin, *Motley MN*  
 Duncan M Gregg, *Staples MN*  
 Ernest Grewe, *Verndale MN*  
 Clifford Gronlund, *Sebeka MN*  
 David Hairsine, *Eagle Bend MN*  
 Bradley R Hamm, *Litchfield MN*  
 Dale L Hansen, *Fargo ND*  
 Lance Heisler, *Staples MN*  
 Joann Heltemes, *Hewitt MN*  
 Robert A Hemphill, *Wadena MN*  
 Lawrence C Hodges, *Cottage Grove MN*  
 Michelle Hoernberg, *Staples MN*  
 Martin L House, *Sauk Centre MN*  
 Herman Hynnek Estate, *Long Prairie MN*  
 W D Jackson Estate, *Verndale MN*  
 Ed Jacob, *Menahga MN*  
 Twylla Japke, *Staples MN*  
 Gail Johnson, *Verndale MN*  
 Jeffrey Johnson, *Staples MN*  
 Joyce M Johnson, *Fargo ND*  
 Vickie L Johnson, *Wadena MN*  
 David N and Debi M Jones, *Wadena MN*  
 George E Jurgenson, *Walker MN*  
 Michael Kahlert, *Osakis MN*  
 James A Kamrath, *Park Rapids MN*  
 Kilkenny Sawmill, *Menahga MN*  
 John Kirby, *Woodland WA*  
 Jerome M Kirscht, *Oak Park MN*  
 Vincent Kleckner, *Burtrum MN*  
 Lorena Kleinschmidt, *Wadena MN*  
 Thomas Klimek, *Eagle Bend MN*  
 Leroy Koski, *Wadena MN*  
 Richard Krantz, *Princeton MN*  
 Warren Krier, *Springfield MO*  
 Danielle Kriesel, *Little Falls MN*  
 Terri L Lamon, *Backus MN*  
 Mary G Larson, *Bertha MN*  
 Richard V Larson, *Becker MN*  
 Arthur C Lawrence Jr, *Wickenburg AZ*  
 Robert & Brenda Lindberg, *Staples MN*  
 Tony Lisson Estate, *Browerville MN*  
 Theodore Loken, *Long Prairie MN*  
 Gerald W Maass, *Waconia MN*  
 James Malone, *Big Lake MN*

Gene E Malmskog Sr, *Stringtown OK*  
 Adriano Malo, *Aurora IL*  
 A.B. Marcy, *Plymouth MN*  
 Sue A McCowan, *Park Rapids MN*  
 Eugene F Meier, *Menahga MN*  
 Curtis Messer, *Verndale MN*  
 Duane H Midtling, *Woodville WI*  
 Marlon Mielke, *Adrian MN*  
 Mill Farms Co, *Maple Plain MN*  
 JoAnn Miller Estate, *Clarissa MN*  
 H Mitchell, *Longville MN*  
 Carl and Lacey Moench, *Staples MN*  
 Benjamin Morlock, *Deer Creek MN*  
 Debra A Morris, *Brooklyn Park MN*  
 Gary L Morse, *Pine River MN*  
 Gary N Motl, *Staples MN*  
 Monroe E Murray, *Bemidji MN*  
 Roger N Nelson, *Wadena MN*  
 William B Nelson, *Long Prairie MN*  
 Northland Implement Inc., *Wadena MN*  
 Odden Contracting Co, *Staples MN*  
 Robert Oldenburg, *Elk River MN*  
 Darrel E Olson, *Sebeka MN*  
 Larry Ostendorf, *Long Prairie MN*  
 Karl Ostrom, *Park Rapids MN*  
 Bradley & Michelle Palmer, *Faribault MN*  
 Edward H Papenfuss, *Bluffton MN*  
 Robert Parks, *Eagle Bend MN*  
 Patricia M Pechan, *Browerville MN*  
 Lori a Peck, *Staples MN*  
 Judy A Pederson, *Las Vegas NV*  
 Rick R Pederson, *Sebeka MN*  
 Raymond Perish, *Browerville MN*  
 Gerald D Peterson, *Long Prairie MN*  
 Gordon Petersen, *Bluffton MN*  
 Richard Peterson, *Foley MN*  
 Stella L Peterson, *Menahga MN*  
 James M Price Jr, *Monticello MN*  
 Berry Profit, *Republic MO*  
 Charles and Jolene Pross, *Little Falls MN*  
 Elaine Radniecki, *Brooks MN*  
 Joshua M Reierson, *Wadena MN*  
 Louis F Reis Estate, *Motley MN*  
 Emil Renczykowski, *Verndale MN*  
 Gregory Renneberg, *Menahga MN*  
 Lloyd Reynolds, *Menahga MN*  
 William G Riewer, *Dent MN*  
 Stephanie Ring, *Pine River MN*  
 Zella Rickert, *Wadena MN*  
 Ronald M Sadusky, *Lakewood CO*  
 Max K Saxton, *Sedro Woolley WA*

Gordon A Schafer, *Wild Rose WI*  
 Jimmy A Schenk, *Orlando FL*  
 Kenneth J Schmitz, *Burleson TX*  
 Samuel E Shepard, *Axtell TX*  
 Edwin S Sherbondy, *Sebeka MN*  
 Donna Simkins, *Staples MN*  
 D H Smith, *Boise ID*  
 Dennis L Smith, *Granite Falls MN*  
 George P Smith Estate, *Parkers Prairie MN*  
 Robert L Sommars, *Weslaco TX*  
 Anthony & Deborah Sorem, *Sauk Rapids MN*  
 Daniel R Souder, *Stacy MN*  
 Soukup I Cattle, *Lino Lakes MN*  
 Richard L Sowers Sr, *Wadena MN*  
 Eleanor Spangler, *Sartell MN*  
 Bonny Y Steeves, *Princeton MN*  
 Jerome Steinberger, *Parachute CO*  
 Gerald Steininger, *Brainerd MN*  
 Kenneth Stottlemire, *Montrose MN*  
 Myron Strom, *New Ulm MN*  
 Douglas E Stroschein, *Long Prairie MN*  
 Laszlo Szathmary, *Wadena MN*  
 Mark A Teal, *San Francisco CA*  
 Alois L Terveer, *Henning MN*  
 Timothy Thom, *Long Prairie MN*  
 Duane Thrugstad, *Brainerd MN*  
 Stanley G Trana, *Cody WY*  
 Donovan & Gail Turvold, *Minnetonka MN*  
 Dale R Tyge, *Ponsford MN*  
 Gregory P Uselman, *Verndale MN*  
 Nancy J Uselman, *Whitefish MT*  
 William Vetsch, *St Michael MN*  
 Scott or Karen Vettleson, *Richmond MN*  
 Harold Warmbold, *Menahga MN*  
 Alain Weibye, *Detroit Lakes MN*  
 Melvin Wellnitz, *Staples MN*  
 Lee C White, *Verndale MN*  
 Ronald L Wichser, *Backus MN*  
 Lyn L Wieshalla, *Little Falls MN*  
 Ruth Wilkins, *Staples MN*  
 Charles R Williams, *Oakdale MN*  
 Doyle D Williams, *Pontiac MO*  
 Roger & Jennifer Wilson, *Circle Pines MN*  
 Thomas A Windschitl, *Roseville MN*  
 Arlo Witt, *Milaca MN*  
 James Woosley, *Clarissa MN*  
 Terry G Wright, *Monett MO*  
 Brian D Young, *Miltona MN*  
 Leroy Young Estate, *Miltona MN*  
 John I Zacher, *Walker MN*  
 Dale D Zimmer, *Clarissa MN*

Todd-Wadena Electric Cooperative is an equal opportunity provider and employer.



# Four Common Culprits of Electrical Fires

Outdated wiring and overloaded circuits are the most common causes of electrical fires. Check the following areas of your home to ensure your home's electrical safety is up to par.



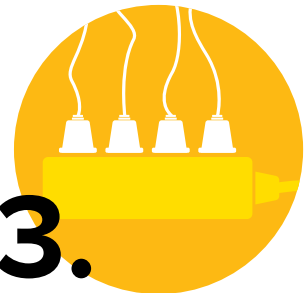
1.

**Electrical outlets:** Faulty electrical outlets are a leading cause in home fires. As outlets age, so do the wires behind them that you can't see. Any loose, damaged, or warm-to-the-touch outlets should be repaired or replaced.

**Electrical wiring:** Outdated wiring is another common cause of electrical fires. Frequently tripped breakers, flickering lights, and burning smells are clear warning signs. If your home is more than 20 years old, it may not be able to handle today's increased power load. If you suspect your home's wiring is outdated, leave this one to the pros and contact a qualified electrician.



2.



3.

**Overloaded cords and outlets:** Extension cords are not permanent solutions. If your big-screen TV, home theater system, and other electronics are plugged into one extension cord, it's time to call an electrician and install additional outlets.

**Old appliances:** Older appliances are more likely to have loose or damaged wiring, which means they're more likely to catch fire. Check older appliances for damage and determine if it's time to upgrade or replace. Also check to ensure you're using appliance-grade outlets. A qualified electrician can help with installation.



4.

## Central Applicators to Begin Vegetation Management in May



Central Applicators will begin vegetation management in the form of mowing and spraying the circuits coming out of the *Sebeka*, *Menahga*, and *Twin Lakes* substations. If you have any questions or

concerns, please contact Central Applicators at (800) 642-6559 by May 11<sup>th</sup>.

## Distributed Energy Resources: NOVA Power Portal

In compliance with Minnesota Statute 216B.1611, Todd-Wadena Electric Cooperative is updating the technical requirements for distributed energy resource interconnections. The existing technical requirement document will be replaced with the Technical Interconnection and Interoperability Requirements (TIIR) and Technical Specification Manual (TSM). These new documents can be found after June 1<sup>st</sup>, 2020, on [www.toddwadena.coop](http://www.toddwadena.coop). These requirements become effective July 1<sup>st</sup>, 2020 and all new DER systems and DER system additions applied for interconnection after July 1<sup>st</sup> will be required to meet these updated requirements.

# Pine to Prairie News

A monthly publication for  
members and friends of



TODD-WADENA  
ELECTRIC COOPERATIVE

Your Touchstone Energy® Cooperative 

[www.toddwadena.coop](http://www.toddwadena.coop)

**Office Hours:** 8:00am - 4:30pm  
Monday - Friday

**Telephone:** (218) 631-3120 or  
(800) 321-8932

**Email:** [todd-wad@toddwadena.coop](mailto:todd-wad@toddwadena.coop)

**Address:** 550 Ash Avenue NE  
P.O. Box 431  
Wadena, MN 56482

## **BOARD OF DIRECTORS**

Miles Kuschel, Chair  
Tom Brichacek, Vice Chair  
Marie Katterhagen, Secretary  
Dale Adams, Treasurer  
Michael Thorson, Director  
Gene Kern, Director  
Kristine Spadgenske, Director

Daniel Carlisle, President/CEO

## **LOCAL ELECTRICAL INSPECTORS**

Todd County:

Troy Bak (320) 760-1017

Wadena County:

Gary Zacharias (218) 631-1392

District 5 (*Todd County*):

Mark Hunter (320) 616-5574

District 6 (*Wadena County*):

Sheldon Monson (218) 689-3260

### **If your electric power goes out:**

First, make sure the problem is not on your side. (*Members may be billed for service calls if the problem is caused by their own equipment.*) Check fuses and circuit breakers in your home and by the meter pole. (*Call us for help, if necessary.*)

Second, check with your neighbors to see if they have power. Then call Todd-Wadena to report the problem. Give your name and account number. Then report any tree branches, twisted wires, broken poles, and whether or not your neighbors are also out of power.

### **Before digging call:**

Gopher State One-Call  
811 or (800) 252-1166

Find us on  

[www.facebook.com/toddwadanaelectriccooperative](http://www.facebook.com/toddwadanaelectriccooperative)  
[www.instagram.com/twec.coop](http://www.instagram.com/twec.coop)

## Todd-Wadena Electric Cooperative

P.O. Box 431

Wadena, MN 56482

Printed on recycled paper.

PRSR STD  
U.S. Postage  
**PAID**  
DPC

## OUR LOBBY IS CLOSED UNTIL FURTHER NOTICE IN RESPONSE TO THE COVID-19 PANDEMIC.

**For Billing/  
Payments, please call  
(218) 632-3233.**

**For Member  
Services, please  
call (218) 632-3234.**

**For outages and any calls after hours, please call  
(218) 631-3120 or (800) 321-8932.**

## May Reader's Contest

ENTRIES MUST BE RECEIVED BY MAY 25<sup>TH</sup>, 2020.

For your chance to be entered in a drawing to win a **\$10 credit** on your bill, correctly answer the questions and include with your TWEC bill. Mail to TWEC, P.O. Box 431, Wadena, MN 56482. Or email the answers to [kvandeventer@toddwadena.coop](mailto:kvandeventer@toddwadena.coop) with the subject line "Reader's Contest". Be sure to include your name and TWEC service address.

1. We've pumped up the rebates for \_\_\_\_\_ Heat Pumps.
2. The \_\_\_\_\_ Committee is a group of members responsible for finding eligible candidates to run for the Cooperative's Board of Directors.
3. Frequently \_\_\_\_\_ electrical cords for broken connectors or any signs of fraying. Throw away worn cords to reduce the possibility of shock, short circuit, or fire.

Name:

Your TWEC Service Address:

<input type="text"/>	<input type="text"/>
----------------------	----------------------

**Congratulations to Becky Schweich of Hampton, MN for  
being the April Reader's Contest winner.**